



Electric

Spring Return Actuators



SRX Series

Spring Return Electric Actuators

Mechanical Spring Torques up to 1800 In-Lbs

Features and Standard Specifications

SRX Series

Electric Spring Return Actuators

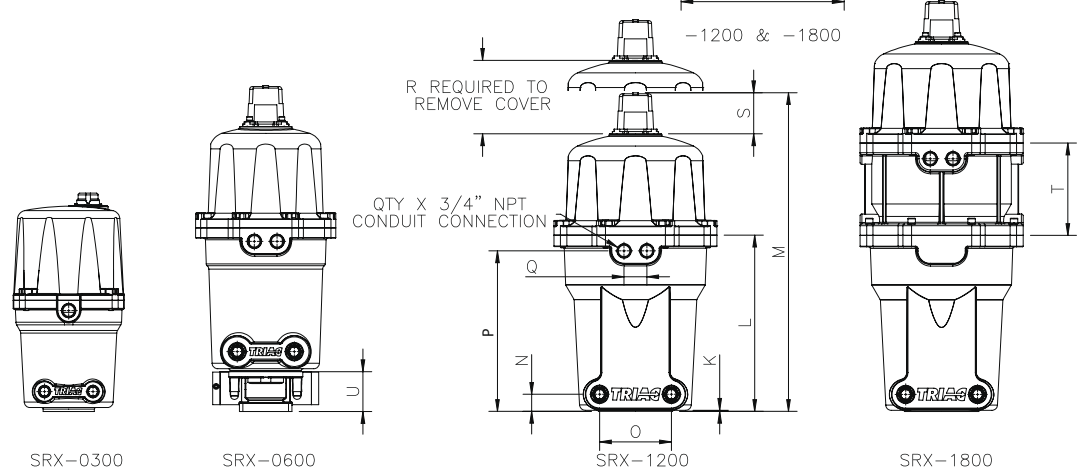
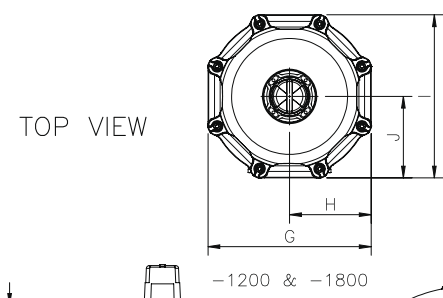
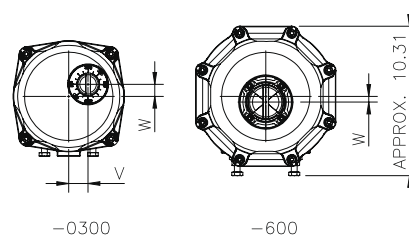
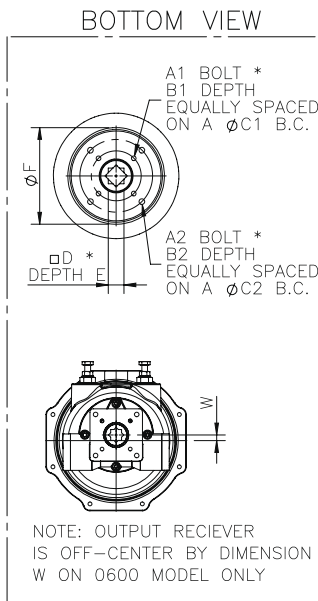


Standard Specifications

Enclosure:	Explosion Proof, Class I, Division 1, Groups C & D, T4 Design Weatherproof, Type 4, 4x	
Power Supply:	24 VDC (SRX-0600 only), 120/220 VAC 1PH, 50/60 Hz	
Motor	24VDC	24V 100W 5A (SRX-0600 only)
	110VAC	110V 50/60 Hz 30W 0.5A
	220VAC	220V 50/60 Hz 30W 0.33A
Limit Switches	24VDC	15A 1/2HP @125/250VAC (SRX-0600 only)
	110VAC	11A 11/3HP @125/250/277VAC 1/2A 125VDC, 1 1/4A 250VDC
	220VAC	11A 11/3HP @125/250/277VAC 1/2A 125VDC, 1 1/4A 250VDC
Stall Protection:	Built in thermal protection, Open at 130±5°C, Close at 85±15°C	
Travel Angle:	0 to 90° ± 10°	
Indicator:	Continuous position indicator	
Space Heater:	10W 2.5A Anti-Condensation	
Cable Conduit:	Two 3/4" NPT (SRX-0300 has One 3/4" NPT)	
Lubrication:	Grease Synthetic	
Terminal Block:	Spring loaded lever push type	
Materials:	Carbon Steel, Alloy Steel, Spring Steel, Stainless Steel, Aluminum Alloy, NBR, ABS and Polycarbonate Plastic	
Ambient Temperature:	-40°F to 140°F (-40°C to 60°C)	
External Coating:	Powder Coating	

Technical and Dimensional Information

SRX Models

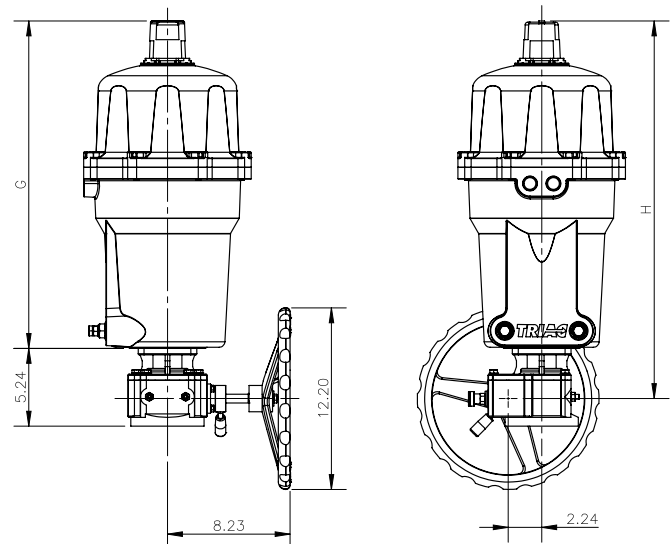
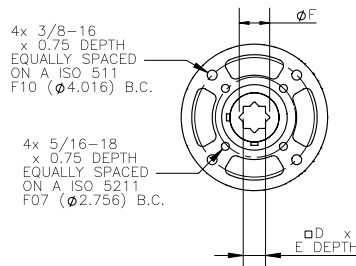


DIMENSIONS (IN)

Model	ISO 5211	A1	A2	B1	B2	C1	C2	D	E	F	G	H	I	J	K	L	M	N
SRX-0300	F07	5/16-18	-	0.47	-	2.756	-	0.669	1.14	3.78	7.68	3.84	7.97	4.13	0.28	7.68	15.08	1.38
SRX-0600	F07/F10	5/16-18	3/8-16	0.59	0.59	2.756	4.016	0.748	1.89	-	9.69	4.84	9.69	4.84	0.20	12.68	22.52	4.13
SRX-1200	F07/F10	5/16-18	3/8-16	0.47	0.59	2.756	4.016	0.866	1.22	5.34	11.26	5.63	11.26	5.63	0.08	12.17	22.01	1.18
SRX-1800	F07/F10	5/16-18	3/8-16	0.47	0.59	2.756	4.016	0.866	1.22	5.34	11.26	5.63	11.26	5.63	0.08	12.17	28.39	1.18

Model	O	P	Q	R	S	T	U	V	W	X
SRX-0300	3.35	7.68	-	5.85	0.87	-	-	1.34	0.83	1
SRX-0600	3.94	11.75	1.57	5.37	2.83	-	2.76	-	0.39	2
SRX-1200	4.96	12.17	1.57	5.44	2.83	-	-	-	-	2
SRX-1800	4.96	17.46	1.57	5.47	2.83	6.38	-	-	-	2

SRX with 2RDGO manual gear override



DIMENSIONS (IN)

Model	Model 2RDGO	D	E	F	G	H	HANDWHEEL TURNS
SRX-0300	-19	0.669	0.78	1.02	15.08	18.47	9
SRX-0600	-19	0.748	0.78	1.02	22.52	25.91	9
SRX-1200	-22	0.866	1.06	1.19	22.01	25.40	9
SRX-1800	-22	0.866	1.06	1.19	28.39	31.78	9

Electric Spring Return Actuators

SRX Series

Electric schematic drawings for various sizes and options are available at www.atcontrols.com. Search "SRX" or navigate to the SRX Series product page:

Home / Actuators / Electric Actuators / Fail Safe Spring Return

Wiring Diagram Reference

Model	Description	Drawing
SRX-0300 thru SRX-1200	115/220 VAC 1PH, Two Position	SE01668
SRX-0600	24 VDC	SE01669

Technical Data

Actuator Model	Spring End Torque	90° Cycle Time	Spring Fail Time	Motor Size	Rated Amps			Duty Cycle	Weight	
					DC	AC			Standard	w/ Manual Override
SIZE	in-lbs	seconds	seconds	Watts	24V	110V	220V	%	Lbs.	Lbs.
SRX-0300	300	10	2	30	N/A	1.0	0.5	50	32	72
SRX-0600	600	30	2	30	20.2	1.0	0.5	50	62	102
SRX-1200	1200	30	7	30	N/A	1.0	0.5	50	80	120
SRX-1800	1800	30	7	30	N/A	1.0	0.5	50	120	160

SRX Series How to Order

1 Model	SRX Explosion Proof, Class I, Division 1, Groups C & D, T4 Design, Type 4, 4x
----------------	---

2 Main Control	Blank (2) Position Control (Open / Close)
M	Standard Modulating Control Card with Transmitter
E	Ethernet/IP (go to 3)
P	Profibus DP (go to 3)
R	Modbus RTU Single Channel (go to 3)
T	Modbus/TCP (go to 3)
U	Modbus RTU Dual Channel Isolated (go to 3)

3 Main Control Type (with Communication Option)	Blank No Communication Control Type
A	Communication Control, Proportional Control/Feedback
B	Communication Control, (2) Position Control (Open/Close)

4 Actuator Sizes	-0300 300 In-Lbs	5 Motor	X 110VAC / 1Phase
-0600	600 In-Lbs	C	24VDC (SRX-0600 model only)
-1200	1200 In-Lbs	D	24VAC - On/Off (SRX-0600 model only)
-1800	1800 In-Lbs	E	220VAC / 1Phase



6 Secondary Control Options	X Multiple Option Designation
------------------------------------	---------------------------------

7 Miscellaneous Options 1	other options available upon request
X	Multiple Option Designation
T	0-10VDC or 4-20mA Transmitter (2 Position Only)
N	1000 Ohm Potentiometer (2 Position Only)
O	5000 Ohm Potentiometer (2 Position Only)
P	10K Ohm Potentiometer (2 Position Only)

8 Fail Direction	FC Fail Close / Clockwise
FO	Fail Open / Counter-Clockwise

9 Additional Options	Blank No Designation, Actuator Series Standard
M	Manual Override

HOW TO ORDER ELECTRIC ACTUATORS								
1	2	3	4	5	6	7	8	9
↓	↓	↓	↓	↓	↓	↓	↓	↓
SRX M -1200 X X X - FC								

