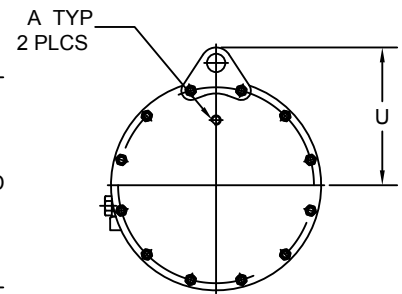
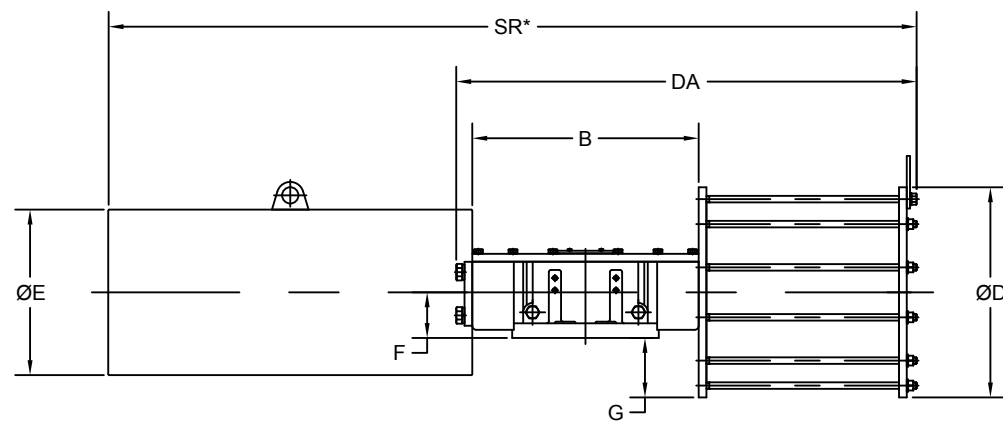


BOTTOM OF ACTUATOR IN FULL CLOCKWISE POSITION WHEN VIEWED FROM ACCESSORY SIDE



DIMENSIONS SHOWN ARE ACCURATE AT TIME OF PRINTING. DUE TO CONTINUOUS PRODUCT IMPROVEMENT, PLEASE CONTACT A-T CONTROLS FOR CURRENT DIMENSIONS

**"CJ" SPRING IS 7.87" LONGER

ACTUATOR MODEL	A	B	C	DA	SR *	D	E	F	G	H	J	K	L	M	N	P	R	S	B.C.D	T	U
S11DA / SR 280	1/2" NPT	19.21	28.27	38.98	76.36	14.06	14.00	4.35	2.70	4.33	5.91	17.26	2.95	5.51	0.79	3.15	M16	0.87	10.00	20 X 12	9.79
S11DA / SR 335	1/2" NPT	19.21	28.31	39.02	77.40	16.14	14.00	4.35	3.74	4.33	5.91	18.31	2.95	5.51	0.79	3.15	M16	0.87	10.00	20 X 12	10.81
S11DA / SR 385	1/2" NPT	19.21	28.42	39.14	77.52	18.31	14.00	4.35	4.83	4.33	5.91	19.39	2.95	5.51	0.79	3.15	M16	0.87	10.00	20 X 12	12.27
S11DA / SR 435	1/2" NPT	19.21	28.42	39.14	77.52	20.31	14.00	4.35	5.83	4.33	5.91	20.39	2.95	5.51	0.79	3.15	M16	0.87	10.00	20 X 12	13.32
S13DA / SR 385	1/2" NPT	21.89	32.24	44.43	86.61	18.31	16.00	4.41	4.75	5.12	7.09	21.36	3.54	6.30	0.87	3.76	M20	0.98	11.73	22 X 14	12.26
S13DA / SR 435	1/2" NPT	21.89	32.24	44.43	86.61	20.31	16.00	4.41	5.75	5.12	7.09	22.36	3.54	6.30	0.87	3.76	M20	0.98	11.73	22 X 14	13.33
S13DA / SR 485	3/4" NPT	21.89	32.80	44.98	87.17	22.76	16.00	4.41	6.97	5.12	7.09	23.58	3.54	6.30	0.87	3.76	M20	0.98	11.73	22 X 14	14.25
S13DA / SR 535	3/4" NPT	21.89	32.80	44.98	87.17	24.80	16.00	4.41	7.99	5.12	7.09	24.60	3.54	6.30	0.87	3.76	M20	0.98	11.73	22 X 14	15.33
S13DA / SR 585	1" NPT	21.89	33.19	45.38	87.56	27.24	16.00	4.41	9.18	5.12	7.09	25.79	3.54	6.30	0.87	3.76	M20	0.98	11.73	22 X 14	17.09
S13DA / SR 635	1" NPT	21.89	33.19	45.38	87.56	29.21	16.00	4.41	10.16	5.12	7.09	26.77	3.54	6.30	0.87	3.76	M20	0.98	11.73	22 X 14	18.05

THE DESIGN AND DISCLOSURE CONTAINED IN THIS DRAWING WAS ORIGINATED BY, AND IS EXCLUSIVE PROPERTY OF A-T CONTROLS, INC. IT IS FURNISHED FOR VENDOR INFORMATION ONLY AND IS NOT AN AUTHORIZATION OR LICENSE TO MAKE THIS CONSTRUCTION OR TO FURNISH THIS INFORMATION TO OTHERS. ALL DRAWINGS MUST BE RETURNED TO A-T CONTROLS, INC. ON DEMAND. THIS DRAWING IS NOT TO BE REPRODUCED OR COPIED IN ANY FORM WITHOUT THE EXPRESS WRITTEN PERMISSION OF A-T CONTROLS, INC.



Division of A-T Controls, Inc.
9955 International Boulevard
Cincinnati, Ohio 45246
Phone: (513) 247-5465
Fax: (513) 247-5462

DRAWN CHS	CHECKED BY DWW	APPROVED
DATE 03/23/2009	DATE 03/23/2009	DATE
TITLE S11 / S13 DIMENSIONAL DRAWING		

TOLERANCE UNLESS OTHERWISE SPECIFIED:
TWO PLACE DECIMAL
DIM. 0.02
THREE PLACE DECIMAL
DIM. 0.010
ANGULAR DIM. 0°-30°
DO NOT SCALE DRAWINGS

1322	08/01/2012	CHS
1281	05/16/2012	NPM
902	02/11/2010	CHS
859	10/13/2009	CHS
838	08/28/2009	CHS
829	08/05/2009	CHS
793	05/21/2009	CHS
ECN#	DATE	BY