

OPERATION OF THD-SERIES JACKSCREWS FOR DOUBLE ACTUATION

INTRODUCTION

A-T Controls THD Jackscrews have been designed and engineered to provide a manual method of operating THD actuators.

!!!WARNING!!!

FOR YOUR SAFETY, IT IS IMPORTANT THAT BEFORE OPERATING THE THD JACKSCREW TO ENSURE THAT ALL LOCKOUT AND TAGOUT PROCEDURES ARE IMPLEMENTED. PLEASE CONSULT FACTORY IF YOU HAVE ANY QUESTIONS ON ANY OF THE PROCEDURES LISTED BELOW.

1) Setting Indicator

The Jackscrew indicator is set by the factory. Ensure that the Jackscrew neutral position is set properly after installation or if the stop bolts on the actuator have been adjusted. Check to make sure that the yoke makes contact with both stop bolts to ensure that the jackscrew is in the neutral position. For information on setting stop bolts refer to the THD IOM. To adjust the indicator, remove the stem cover by unscrewing the set screw and turning the stem cover counter-clockwise (See Figure 1). Once the stem cover is removed, adjust the nuts in the desired direction (See Figure 2).

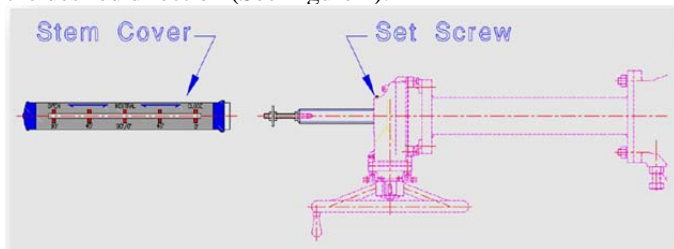


Figure 1

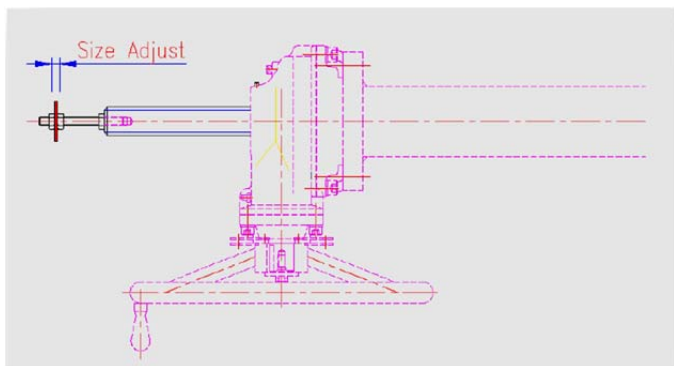


Figure 2

!!!WARNING!!!

NEVER OPERATE THE ACTUATOR WHEN THE JACKSCREW IS NOT IN THE NEUTRAL POSITION. THIS COULD CAUSE DAMAGE TO THE ACTUATOR OR JACKSCREW.

2) Operation of the Actuator

A) Verify that the clockwise (CW) and counter-clockwise (CCW) supply ports on the actuator are **not** open to the atmosphere by turning the handles on the 3-way valves so that they are parallel to the air flow (see Figure 3).

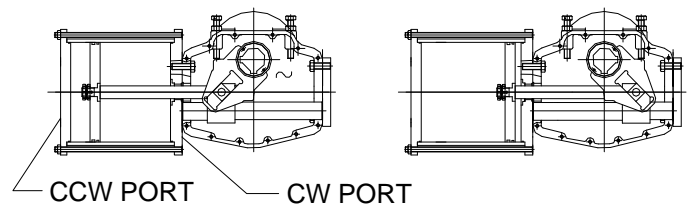


Figure 3

B) Make sure that the Jackscrew is in the neutral position (see Figure 4).

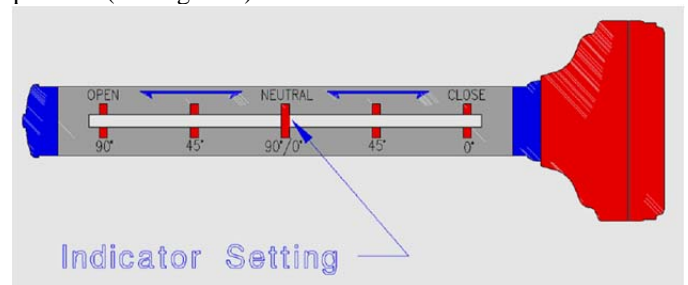


Figure 4

C) Applying air pressure to the CCW port drives the piston toward the front flange which turns the yoke counterclockwise when viewed from the accessory side of the actuator. When pressure is applied to the CW Port the piston is driven towards the end cap which turns the yoke clockwise. This is shown in Figure 3.

3) Operation of Jackscrew

A) Verify that the clockwise and counter-clockwise supply ports on the actuator are open to the atmosphere by

turning the handles on the 3-way valves so that they are perpendicular to the air flow (see Figure 3).

B) To turn the valve in the clockwise direction, turn the hand wheel in the clockwise direction. To turn the valve in the counter-clockwise direction, turn the hand wheel counter-clockwise.

C) Be sure before going back to pneumatic operation that the Jackscrew is set in the neutral position and both block and bleed valves are **not** open to the atmosphere.

A-T Controls product, when properly selected, is designed to perform its intended function safely during its useful life. However, the purchaser or user of A-T Controls products should be aware that A-T Controls products might be used in numerous applications under a wide variety of industrial service conditions. Although A-T Controls can provide general guidelines, it cannot provide specific data and warnings for all possible applications. The purchaser / user must therefore assume the ultimate responsibility for the proper sizing and selection, installation, operation, and maintenance of A-T Controls products. The user should read and understand the installation operation maintenance (IOM) instructions included with the product, and train its employees and contractors in the safe use of A-T Controls products in connection with the specific application.

While the information and specifications contained in this literature are believed to be accurate, they are supplied for informative purposes only. Because A-T Controls is continually improving and upgrading its product design, the specifications, dimensions and information contained in this literature are subject to change without notice. Should any question arise concerning these specifications, the purchaser/user should contact A-T Controls.

For product specifications go to <http://download.a-tcontrols.com/>

A-T Controls, Inc. • 9955 International Boulevard, Cincinnati, OH 45246 • Phone: (513) 530-5175 • Fax: (513) 247-5462 • www.atcontrols.com