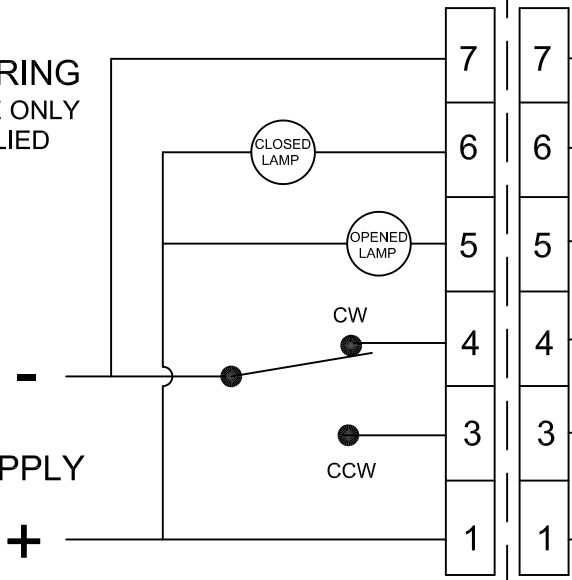
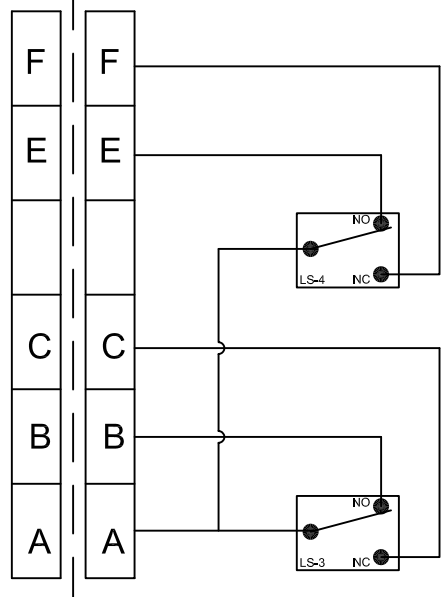
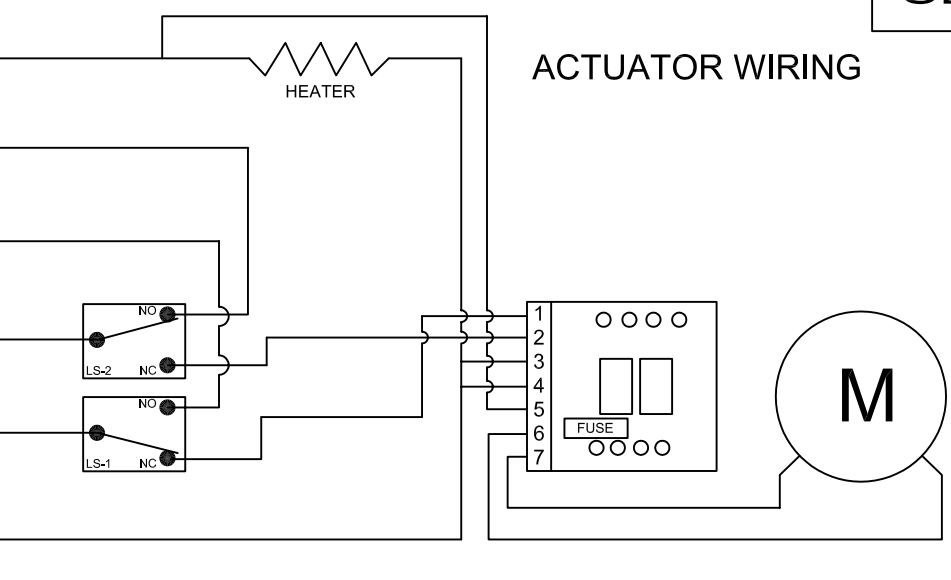


FIELD WIRING
REFERENCE ONLY
NOT SUPPLIED

12VDC
POWER SUPPLY



ACTUATOR WIRING



NOTES:

1. FIELD WIRING IS SHOWN FOR REFERENCE ONLY AND IS NOT SUPPLIED WITH ACTUATOR
2. SWITCHES ARE FROM BOTTOM TO TOP (i.e. switch 1 is on the bottom, switch 2 is the next one up, etc.)
3. ROTATION IS VIEWED FROM THE MOTOR SIDE.
4. WIRING DIAGRAM SHOWN IN THE FULL CLOCKWISE POSITION

THE DESIGN AND DISCLOSURE CONTAINED IN THIS DRAWING WAS ORIGINATED BY, AND IS EXCLUSIVE PROPERTY OF A-T CONTROLS, INC. IT IS FURNISHED FOR VENDOR INFORMATION ONLY AND IS NOT AN AUTHORIZATION -OR- LICENSE TO MAKE THIS CONSTRUCTION OR TO FURNISH THIS INFORMATION TO OTHERS. ALL DRAWINGS MUST BE RETURNED TO A-T CONTROLS, INC. ON DEMAND. THIS DRAWING IS NOT TO BE REPRODUCED OR COPIED IN ANY FORM WITHOUT THE EXPRESS WRITTEN PERMISSION OF A-T CONTROLS, INC.



Division of A-T Controls, Inc.
11363 Deerfield Road
Cincinnati, Ohio 45242
Phone: (513) 247-5465
Fax: (513) 247-5462

DRAWN SAH	CHECKED BY	APPROVED
DATE 10/21/04	DATE	DATE
TITLE ETI-300B / ETI-400B WIRING DIAGRAM 12 VDC, 3-WIRE CONTROL		

TOLERANCE UNLESS OTHERWISE SPECIFIED:
TWO PLACE DECIMAL
DIM. ⌀.02
THREE PLACE DECIMAL
DIM. ⌀0.10
ANGULAR DIM. 0°-30°
DO NOT SCALE DRAWINGS

ECN	DATE	BY
ECN#	DATE	BY