



Floor Mounted Damper Drives

Pneumatic

Up to 300,000 In-Lbs torque

Electric

Up to 80,000 In-Lbs torque



A-T Controls, Inc.



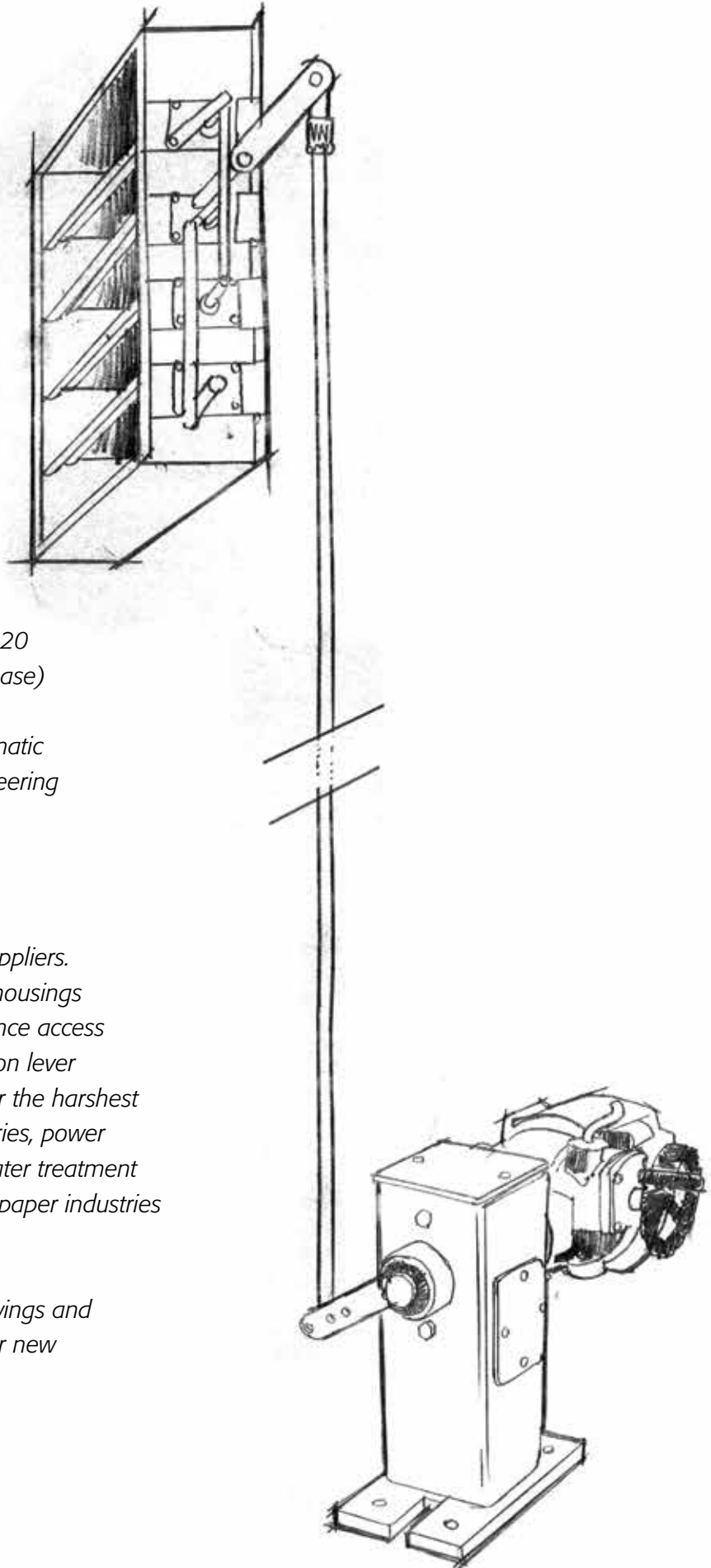
Floor Mounted Damper Drives

Triac floor mounted damper drives are the best choice for operating dampers, vanes and fan control where high vibration, heat, extreme cold, dust and inaccessibility render direct coupling of actuators to shafts impractical.

Available in pneumatic (on-off and modulating), and electric (24 VDC, 120 VAC 1-phase, 220 and 440 volt 3-phase) configurations, these rugged drives combine industry proven Triac pneumatic and electric actuators with our engineering expertise.

The rugged frames can be ordered to dimensionally replace older drives manufactured by several previous suppliers. Triac frames consist of welded steel housings with pillow block bearings, maintenance access panels, and our unique infinite position lever arms. The units are tough enough for the harshest environments found in today's refineries, power plants, steel-making boiler rooms, water treatment facilities, pollution controls, pulp and paper industries and co-generation turbine units.

Contact A-T Controls for specific drawings and specifications for your replacement or new applications.





Pneumatic Damper Drive Options

Torque 420 In-Lbs to 300,000 In-Lbs
 Solenoid Valves
 Limit Switches
 Positioners
 (4-20ma, Digital, Hart Protocol)
 Position Transmitters
 Manual Overrides
 Air Lockup Circuits
 High Temperature Seals
 Custom Connection Linkage

How to Order



Electric Damper Drive Options

Torque 690 In-Lbs to 80,000 In-Lbs
 24 VDC
 Single Phase
 3-phase
 On-off
 Modulating
 Custom Connection Linkage

Applications

Dampers
 Vanes
 Van Axial Fans
 ID Fans
 Louvers
 FD Fans
 ID Fans
 Seal Air Fans
 Process Heaters
 Reheat Dampers
 SCR Systems
 Fly Ash Systems
 Bottom Ash Hoppers
 Flap Gate
 Baghouse

PNEUMATIC ACTUATORS			
DOUBLE ACTING	MODEL NO.	SPRING RETURN	MODEL NO.
2R200DA @ 80 PSI = 1,431 IN-LBS	FD2R5D	2R200SR @ 80 PSI = 420 IN-LBS	FD2R5S
2R300DA @ 80 PSI = 2,434 IN-LBS	FD2R6D	2R300SR @ 80 PSI = 880 IN-LBS	FD2R6S
2R500DA @ 80 PSI = 3,498 WIN-LBS	FD2R7D	2R500SR @ 80 PSI = 1,325 IN-LBS	FD2R7S
2R850DA @ 80 PSI = 6,565 IN-LBS	FD2R8D	2R850SR @ 80 PSI = 1,815 IN-LBS	FD2R8S
2R1200DA @ 80 PSI = 9,020 IN-LBS	FD2R9D	2R1200SR @ 80 PSI = 2,625 IN-LBS	FD2R9S
2R1750DA @ 80 PSI = 11,448 IN-LBS	FD2R0D	2R1750SR @ 80 PSI = 3,475 IN-LBS	FD2R0S
2R2500DA @ 80 PSI = 17,778 IN-LBS START	FD2RAD	2R2500SR @ 80 PSI = 5,520 IN-LBS	FD2RAS
2R3500DA @ 80 PSI = 35,550 IN-LBS START	FD2RBD	2R3500SR @ 80 PSI = 11,000 IN-LBS	FD2RBS

ARM LENGTH BY CUSTOMER
HOLE SIZE BY CUSTOMER

ACCESSORIES

SOLENOID VALVE 120 VAC NEMA 4 / 4X
 SPEED CONTROLS
 FILTER REGULATOR
 LIMIT SWITCH NEMA 4
 3-15 POSITIONER
 4-20 MA POSITIONER NEMA 4
 4-20 MA POSITIONER W/ TRANSMITTER NEMA 4
 FLOW CONTROL VALVES
 LOCKUP VALVE
 MANUAL OVERRIDE

ELECTRIC ACTUATORS	
ON-OFF/MODULATING	MODEL NO.
WE-1350 = 1,350 IN-LBS	FDWEC
WE-1700 = 1,700 IN-LBS	FDWED
WE-2640 = 2,640 IN-LBS	FDWEE
WE-4400 = 4,400 IN-LBS	FDWEF
WE-5200 = 5,200 IN-LBS	FDWEG
WE-6900 = 6,900 IN-LBS	FDWEH
WE-10500 = 10,500 IN-LBS	FDWEJ
WE-17500 = 17,500 IN-LBS	FDWEK
WE-25900 = 25,900 IN-LBS	FDWEL

ARM LENGTH BY CUSTOMER
HOLE SIZE BY CUSTOMER

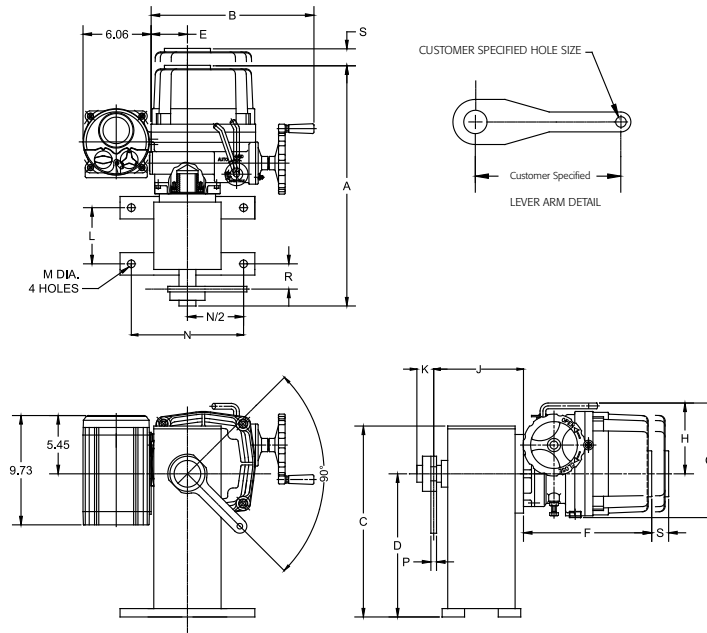
VOLTAGE (options)

120VAC/1PH
 220VAC/1PH
 220VAC/3PH
 380/440VAC/3PH
 460/480VAC/3PH

CONTROL

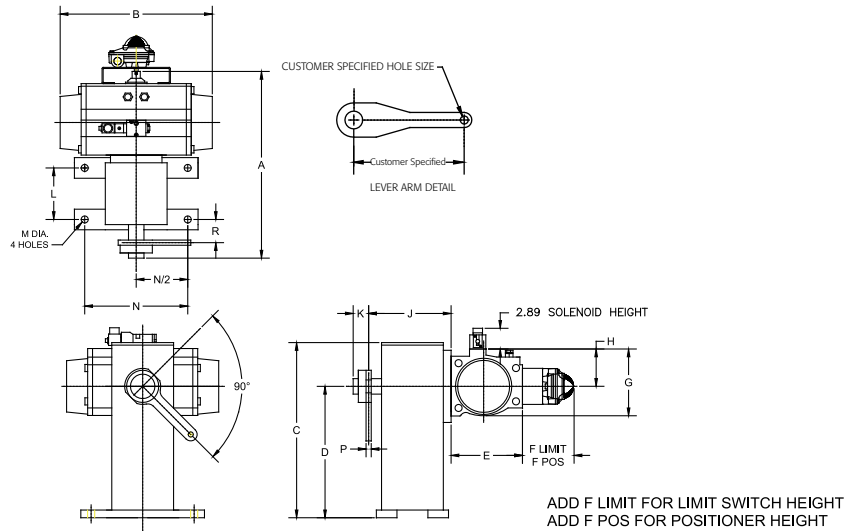
2 POSITION CONTROL (OPEN/CLOSE)
 4-20 MA CONTROL
 4-20 MA CONTROL W/ TRANSMITTER

Dimensions



TRIAC Floor Drive with WE Series Actuators

ACTUATOR	A	B	C	D	E	F	G	H	J	K	L	M	N	P	R	S
WE-1350	20.05	13.31	17.00	12.75	2.87	10.55	9.02	5.59	8.00	1.50	5.00	0.68	10.00	0.50	1.81	6.30
WE-1700	20.05	13.31	17.00	12.75	2.87	10.55	9.02	5.59	8.00	1.50	5.00	0.68	10.00	0.50	1.81	6.30
WE-2640	20.92	14.49	17.00	12.75	3.23	11.42	10.20	6.30	8.00	1.50	5.00	0.68	10.00	0.50	1.81	7.09
WE-4400	21.47	14.49	17.00	12.75	3.23	11.97	10.20	6.30	8.00	1.50	5.00	0.68	10.00	0.50	1.81	7.09
WE-5200	21.47	14.49	17.00	12.75	3.23	11.97	10.20	6.30	8.00	1.50	5.00	0.68	10.00	0.50	1.81	7.09
WE-6900	22.67	16.14	17.00	12.75	4.06	12.99	11.69	7.32	8.31	1.37	5.00	0.68	12.00	0.75	2.06	8.27
WE-10500	22.67	16.14	17.00	12.75	4.06	12.99	11.69	7.32	8.31	1.37	5.00	0.68	12.00	0.75	2.06	8.27
WE-17500	34.80	16.14	24.25	18.00	4.06	22.17	12.56	7.32	10.38	2.25	7.00	0.81	16.00	1.00	2.38	8.27
WE-25900	34.80	16.14	24.25	18.00	4.06	22.17	12.56	7.32	10.38	2.25	7.00	0.81	16.00	1.00	2.38	8.27



TRIAC Floor Drive with 2R Series Actuators, Solenoid Valve, Limit Switch or Positioner

ACTUATOR	A	B	C	D	E	F POS	F LIMIT	G	H	J	K	L	M	N	P	R
2R200	15.57	11.51	17.00	12.75	5.28	7.97	4.24	5.06	2.89	8.00	1.50	5.00	0.68	10.00	0.50	1.81
2R300	16.47	13.92	17.00	12.75	6.18	7.97	4.24	5.91	3.35	8.00	1.50	5.00	0.68	10.00	0.50	1.81
2R500	17.61	15.20	17.00	12.75	6.93	8.37	4.64	6.50	3.70	8.00	1.50	5.00	0.68	10.00	0.50	1.81
2R850	18.59	21.01	17.00	12.75	7.91	8.37	4.64	6.89	3.90	8.00	1.50	5.00	0.68	10.00	0.50	1.81
2R1200	20.03	22.70	17.00	12.75	9.17	8.37	4.64	7.60	4.29	8.31	1.37	5.00	0.68	12.00	0.75	2.06
2R1750	20.98	24.67	17.00	12.75	10.12	8.37	4.64	8.31	4.72	8.31	1.37	5.00	0.68	12.00	0.75	2.06
2R2500	23.93	19.94	24.25	18.00	10.12	8.37	4.64	9.38	4.75	10.38	2.25	7.00	0.81	16.00	1.00	2.38
2R3500	23.93	25.44	24.25	18.00	10.12	8.37	4.64	9.38	4.75	10.38	2.25	7.00	0.81	16.00	1.00	2.38