

Size	VALVE DIMENSIONS								OPERATOR DIMENSIONS								(LBS)
	ØA	ØB	E	J	K	L1	L2	L3	M	N	P	ØR	S	T	U	V	
1/2"	0.37	0.5	1.89	1.58	5.91	3.51	5.50	4.51	3.31	0.32	0.354	0.430	0.26	1.417	0.28	1.654	2
3/4"	0.62	0.75	1.92	1.89	5.91	4.00	5.75	4.87	3.31	0.32	0.354	0.430	0.26	1.417	0.28	1.654	2
1"	0.87	1	1.98	2.23	6.50	4.51	6.25	5.38	3.78	0.43	0.433	0.563	0.26	1.654	0.28	1.969	4
1-1/2"	1.37	1.5	2.21	3.05	8.46	5.52	7.50	6.51	5.00	0.55	0.551	0.744	0.30	1.969	0.35	2.756	9
2"	1.87	2	2.44	3.35	8.46	6.26	8.50	7.38	5.28	0.55	0.551	0.744	0.30	1.969	0.35	2.756	12
2-1/2"	2.37	2.5	2.51	4.28	11.81	6.85	9.75	8.30	6.57	0.66	0.669	0.885	0.39	2.756	0.47	4.016	24
3"	2.87	3	2.65	4.63	14.57	7.61	10.50	9.06	6.93	0.70	0.669	0.885	0.39	2.756	0.47	4.016	31
4"	3.83	4	3.1	5.22	14.57	8.90	12.50	10.70	7.56	0.66	0.748	0.940	0.39	2.756	0.47	4.016	49



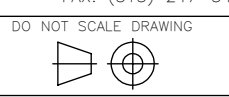
9955 INTERNATIONAL BLVD.  
CINCINNATI, OHIO 45246  
PHONE: (513) 247-5465  
FAX: (513) 247-5462

DRAWN BY NPM    CHECKED BY CMB    RELEASED BY CMB  
DATE 06/25/20    DATE 06/25/20    DATE 06/25/20

**VALVES, ACTUATORS, AND AUTOMATION CONTROLS**

SHEET 1 of 1

THE DESIGN AND DISCLOSURE CONTAINED IN THIS DRAWING WAS ORIGINATED BY, AND IS EXCLUSIVE PROPERTY OF A-T CONTROLS, INC. IT IS FURNISHED FOR VENDOR INFORMATION ONLY AND IS NOT AN AUTHORIZATION OR LICENSE TO MAKE THIS CONSTRUCTION OR TO FURNISH THIS INFORMATION TO OTHERS. ALL DRAWINGS MUST BE RETURNED TO A-T CONTROLS, INC. ON DEMAND. THIS DRAWING IS NOT TO BE REPRODUCED OR COPIED IN ANY FORM WITHOUT THE EXPRESS WRITTEN PERMISSION OF A-T CONTROLS, INC.



DESCRIPTION  
H78-SERIES HIGH PURITY BALL VALVE CATALOG DRAWING

MATERIAL	
DRAWING NO.	REVISION
P02762	A