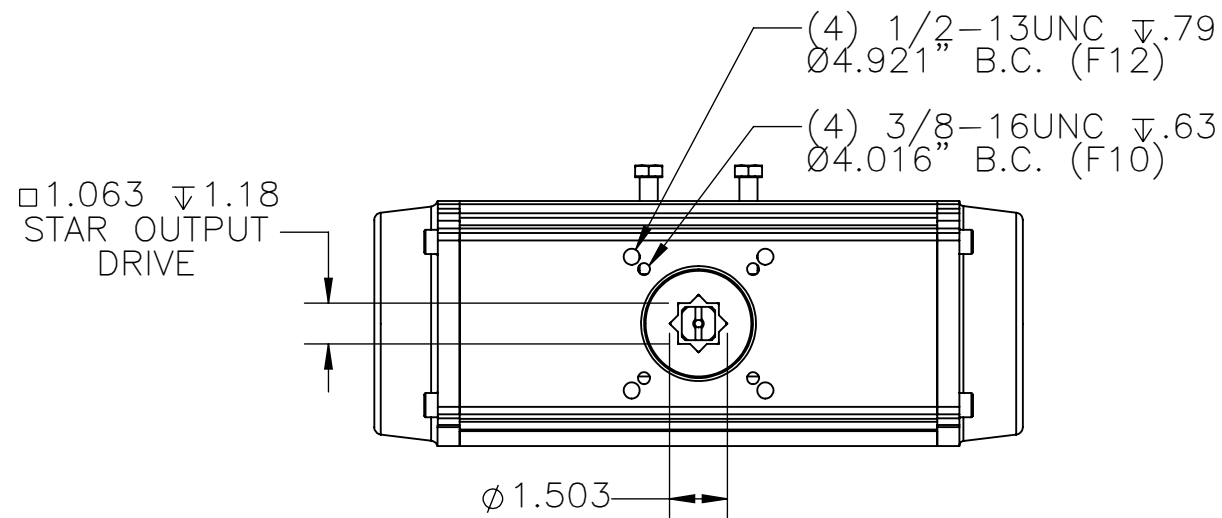


Weight (lbs)	DA	35.3
	SR	39.7
Volume (in ³ per 90°)	CW	256.9
	CCW	206.9
Cycle Time (seconds per 90°)	DA	2.9
	SR	2.9



3R700 Output Torque (in*lbs) per Air Supply (psi)

	Springs per Side	Spring Torque		40 psi		60 psi		80 psi		100 psi		120 psi	
		End	Break	End	Break	End	Break	End	Break	End	Break	End	Break
	2	738	1108	1454	1824	2735	3105	4016	4386	5297	5667	-	-
	3	1107	1663	900	1455	2181	2736	3462	4017	4743	5298	-	-
	4	1477	2217	345	1086	1626	2367	2908	3648	4189	4929	-	-
	5	1846	2771	-	-	1072	1998	2353	3279	3634	4560	-	-
	6	2215	3325	-	-	518	1628	1799	2910	3080	4191	-	-
	Double Acting	-		2562		3843		5124		6406		7687	

Direct Acting:
 Pressure at port P1 will result in a clockwise rotation
 Pressure at port P2 will result in a counter-clockwise rotation
 Reverse Acting:
 Pressure at port P1 will result in a counter-clockwise rotation
 Pressure at port P2 will result in a clockwise rotation

NOTES: Accessory mounting holes are not intended for Manual Gear Overrides or Stop Blocks. Cycle times are under no load conditions. Air line size, air capacity, and valve torque characteristics affect these cycle times. Faster or slower cycle times can be accomplished using special control components.



9955 INTERNATIONAL BLVD.
 CINCINNATI, OHIO 45246
 PHONE: (513) 247-5465
 FAX: (513) 247-5462

DRAWN BY SJK
 CHECKED BY NPM
 RELEASED BY NPM

DATE 07/13/21
 DATE 07/14/21
 DATE 07/14/21

VALVES, ACTUATORS, AND AUTOMATION CONTROLS

SHEET 1 of 1

MATERIAL

DRAWING NO. P03923

REVISION

THE DESIGN AND DISCLOSURE CONTAINED IN THIS DRAWING WAS ORIGINATED BY, AND IS EXCLUSIVE PROPERTY OF A-T CONTROLS, INC. IT IS FURNISHED FOR VENDOR INFORMATION ONLY AND IS NOT AN AUTHORIZATION OR LICENSE TO MAKE THIS CONSTRUCTION OR TO FURNISH THIS INFORMATION TO OTHERS. ALL DRAWINGS MUST BE RETURNED TO A-T CONTROLS, INC. ON DEMAND. THIS DRAWING IS NOT TO BE REPRODUCED OR COPIED IN ANY FORM WITHOUT THE EXPRESS WRITTEN PERMISSION OF A-T CONTROLS, INC.