

LIMIT SWITCH OPERATION			
SWITCH	CLOSED	INTERMEDIATE	OPEN
CLS 1-2		■	
CLS 1-3	■		
OLS 1-2		■	
OLS 1-3			■
ACLS 1-2		■	
ACLS 1-3	■		
AOLS 1-2		■	
AOLS 1-3			■

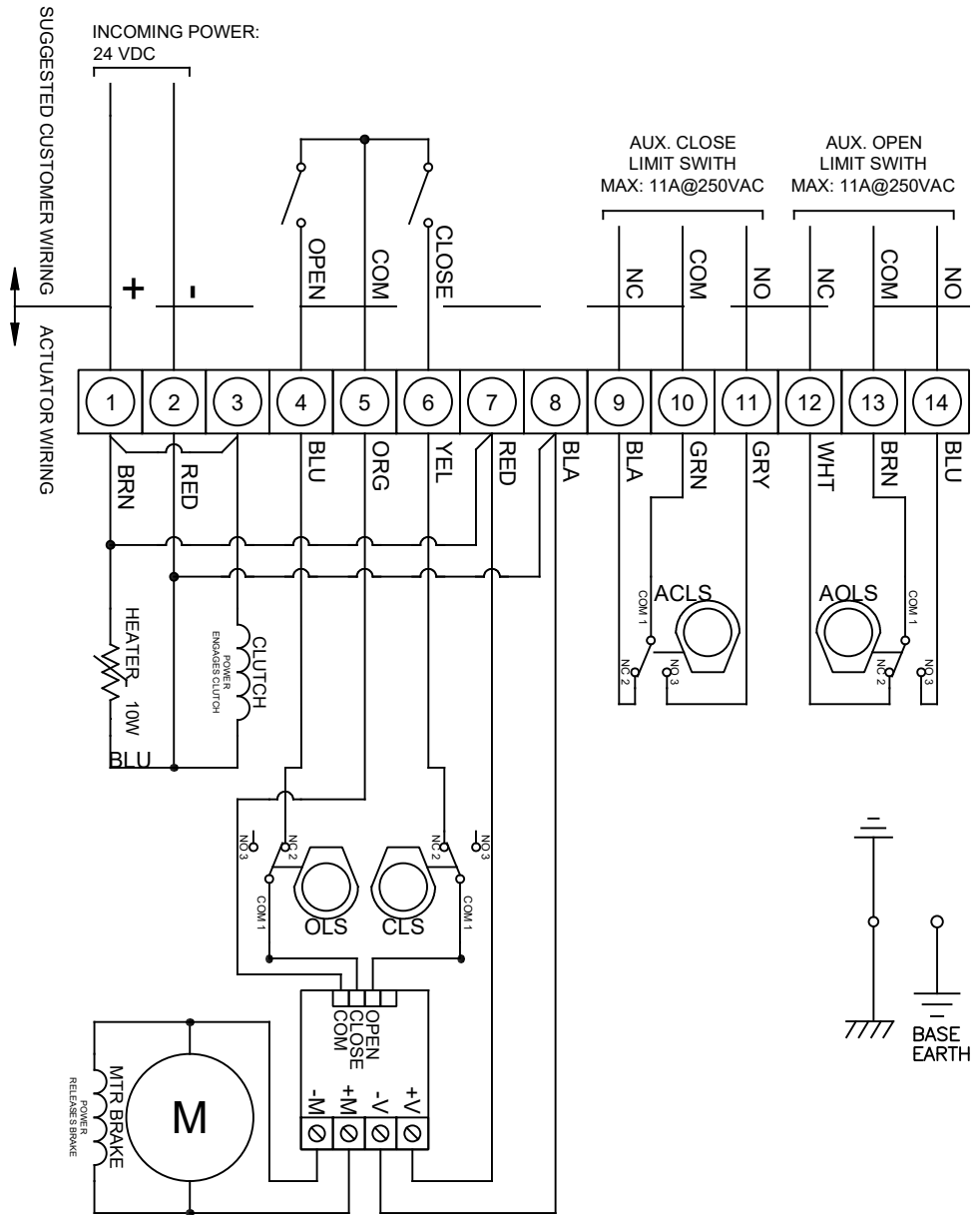
= OPEN CIRCUIT    
 = CLOSED CIRCUIT

SYMBOL	DESCRIPTION	RATING
ACLS	AUX. CLOSE LIMIT SWITCH	11A@250VAC
CLS	CLOSE LIMIT SWITCH	
AOLS	AUX. OPEN LIMIT SWITCH	
OLS	OPEN LIMIT SWITCH	

**EACH ACTUATOR SHOULD BE POWERED THROUGH INDIVIDUAL SWITCH OR RELAY CONTACTS TO PREVENT CROSS FEED BETWEEN TWO OR MORE ACTUATORS.**

**Operation Notes:**

- Power must be applied across terminals 2 & 3 to engage the clutch coil. Loss of power will release spring clutch and return actuator to fail position (limited by adjustable mechanical stop bolt).
- Connecting terminal 4 & 5 will drive motor CCW. Brake deenergizes (engages) when NO of OLS closes to hold actuator in CCW position.
- Connecting terminal 5 & 6 will drive motor CW. Brake deenergizes (engages) when NO of CLS closes to hold actuator in CW position.
- Removing power from terminals 5 & 4/6 will deenergize (engage) brake and hold actuator in intermediate STOP position.
- Fail Closed (FC) Model: Fail Position = CW  
Fail Open (FO) Model: Fail Position = CCW



	9955 INTERNATIONAL BLVD. CINCINNATI, OHIO 45246 PHONE: (513) 247-5465 FAX: (513) 247-5462	TOLERANCE UNLESS OTHERWISE SPECIFIED: TWO PLACE DECIMAL DIM. ±0.02 THREE PLACE DECIMAL DIM. ±0.010 ANGULAR DIM. ±0°-30'	DRAWN BY <b>KJS</b> CHECKED BY <b>TEM</b> RELEASED BY <b>TEM</b>	HEAT # _____ SHEET <b>1</b> OF <b>1</b>
	DO NOT SCALE DRAWING 	DESCRIPTION <b>SRX-0600 24VDC WIRING DIAGRAM</b>		MATERIAL _____
	THE DESIGN AND DISCLOSURE CONTAINED IN THIS DRAWING WAS ORIGINATED BY, AND IS EXCLUSIVE PROPERTY OF A-T CONTROLS, INC. IT IS FURNISHED FOR VENDOR INFORMATION ONLY AND IS NOT AN AUTHORIZATION OR LICENSE TO MAKE THIS CONSTRUCTION OR TO FURNISH THIS INFORMATION TO OTHERS. ALL DRAWINGS MUST BE RETURNED TO A-T CONTROLS, INC. ON DEMAND. THIS DRAWING IS NOT TO BE REPRODUCED OR COPIED IN ANY FORM WITHOUT THE EXPRESS WRITTEN PERMISSION OF A-T CONTROLS, INC.			DATE <b>04/01/22</b> DATE <b>04/04/22</b> DATE <b>04/04/22</b>
				REVISION <b>B</b>