

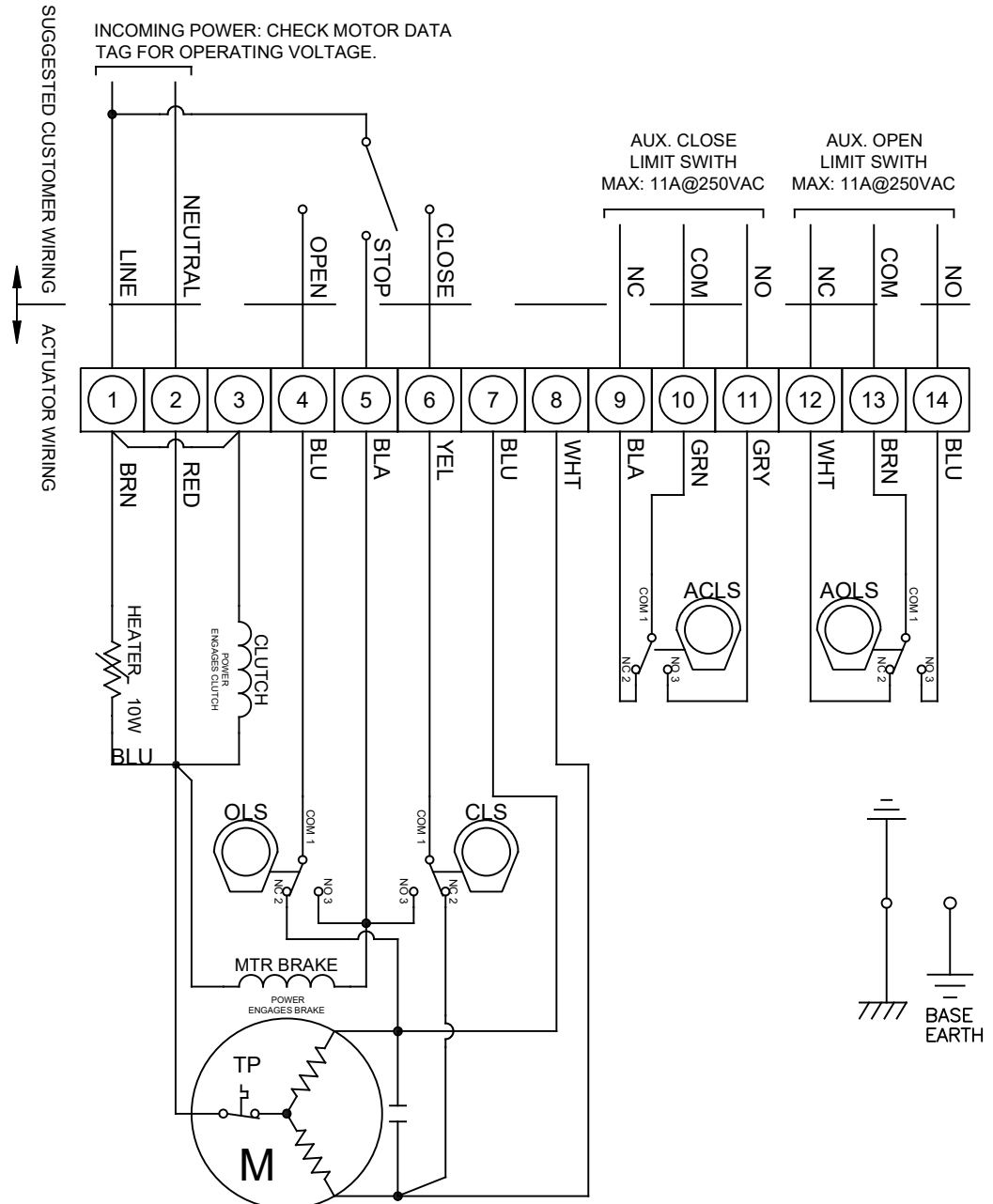


LIMIT SWITCH OPERATION			
SWITCH	CLOSED	INTERMEDIATE	OPEN
CLS 1-2			
CLS 1-3			
OLS 1-2			
OLS 1-3			
ACLS 1-2			
ACLS 1-3			
AOLS 1-2			
AOLS 1-3			
 = OPEN CIRCUIT		 = CLOSED CIRCUIT	
SYMBOL	DESCRIPTION	RATING	
ACLS	AUX. CLOSE LIMIT SWITCH	11A @ 250 VAC	
CLS	CLOSE LIMIT SWITCH		
AOLS	AUX. OPEN LIMIT SWITCH		
OLS	OPEN LIMIT SWITCH		
EACH ACTUATOR SHOULD BE POWERED THROUGH INDIVIDUAL SWITCH OR RELAY CONTACTS TO PREVENT CROSS FEED BETWEEN TWO OR MORE ACTUATORS.			

Operation Notes:

- Power must be applied across terminals 1 & 2 to engage the clutch coil. Loss of power will release spring clutch and return actuator to fail position (limited by adjustable stop).
- Power to terminal 4 will drive motor CCW. Brake energizes when NO of OLS closes to hold actuator in CCW position.
- Power to terminal 6 will drive motor CW. Brake energizes when NO of CLS closes to hold actuator in CW position.
- Power to terminal 5 will energize brake and hold actuator in intermediate STOP position.
- Fail Closed (FC) Model: Fail Position = CW
Fail Open (FO) Model: Fail Position = CCW

INCOMING POWER: CHECK MOTOR DATA TAG FOR OPERATING VOLTAGE.



9955 INTERNATIONAL BLVD.
CINCINNATI, OHIO 45246
PHONE: (513) 247-5465
FAX: (513) 247-5462

TOLERANCE UNLESS OTHERWISE SPECIFIED:
TWO PLACE DECIMAL
DIM. #0.02
THREE PLACE DECIMAL
DIM. #0.010
ANGULAR DIM. #0°-30'

DRAWN BY KJS
DATE 09/15/20

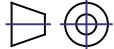
CHECKED BY TEM
DATE 09/15/20

RELEASED BY TEM
DATE 09/15/20

HEAT #

SHEET 1 OF 1

MATERIAL

DO NOT SCALE DRAWING


DESCRIPTION
SRX-0600 110/220 VAC 1 PH WIRING DIAGRAM

DRAWING NO.
se01679

REVISION
A

THE DESIGN AND DISCLOSURE CONTAINED IN THIS DRAWING WAS ORIGINATED BY, AND IS EXCLUSIVE PROPERTY OF A-T CONTROLS, INC. IT IS FURNISHED FOR VENDOR INFORMATION ONLY AND IS NOT AN AUTHORIZATION OR LICENSE TO MAKE THIS CONSTRUCTION OR TO FURNISH THIS INFORMATION TO OTHERS. ALL DRAWINGS MUST BE RETURNED TO A-T CONTROLS, INC. ON DEMAND. THIS DRAWING IS NOT TO BE REPRODUCED OR COPIED IN ANY FORM WITHOUT THE EXPRESS WRITTEN PERMISSION OF A-T CONTROLS, INC.