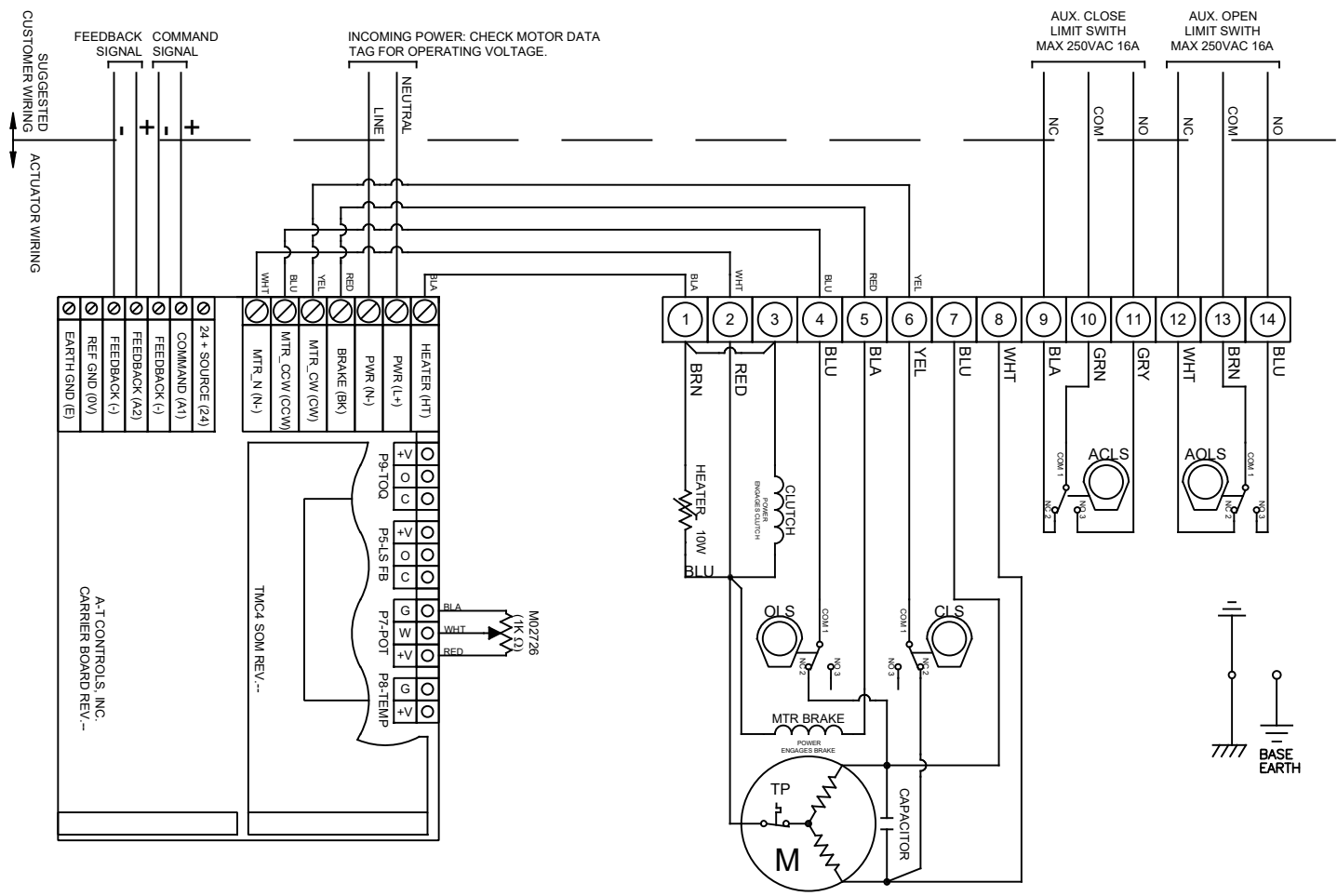


LIMIT SWITCH OPERATION			
SWITCH	CLOSED	INTERMEDIATE	OPEN
CLS 1-2		■	
CLS 1-3		■	
OLS 1-2	■		
OLS 1-3	■		
ACLS 1-2		■	
ACLS 1-3		■	
AOLS 1-2	■		
AOLS 1-3	■		

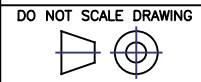
	= OPEN CIRCUIT		= CLOSED CIRCUIT
--	----------------	--	------------------

SYMBOL	DESCRIPTION	RATING
ACLS	AUX. CLOSE LIMIT SWITCH	11A @ 250 VAC
CLS	CLOSE LIMIT SWITCH	
AOLS	AUX. OPEN LIMIT SWITCH	
OLS	OPEN LIMIT SWITCH	

- Notes:
- CLS and OLS limit switches set at or just outside of calibrated 0 - 100 % operating range to avoid interfering with feedback potentiometer positioning.
 - Loss of power will cause spring to return actuator to fail position (limited by adjustable mechanical stop bolt).
 - Fail Closed (FC) Model: Fail Position = CW
Fail Open (FO) Model: Fail Position = CCW



9955 INTERNATIONAL BLVD.
CINCINNATI, OHIO 45246
PHONE: (513) 247-5465
FAX: (513) 247-5462



TOLERANCE UNLESS OTHERWISE SPECIFIED:
TWO PLACE DECIMAL DIM. ±0.02
THREE PLACE DECIMAL DIM. ±0.010
ANGULAR DIM. ±0.5°

DRAWN BY KJS
DATE 04/01/22

CHECKED BY TEM
DATE 04/04/22

RELEASED BY TEM
DATE 04/04/22

HEAT # SHEET 1 of 1

DESCRIPTION
SRXM-0600 110/220 VAC
CONTROLLED BY TMC4 (TMC-4B002)

MATERIAL
DRAWING NO. SE01815
REVISION

THE DESIGN AND DISCLOSURE CONTAINED IN THIS DRAWING WAS ORIGINATED BY, AND IS EXCLUSIVE PROPERTY OF A-T CONTROLS, INC. IT IS FURNISHED FOR VENDOR INFORMATION ONLY AND IS NOT AN AUTHORIZATION OR LICENSE TO MAKE THIS CONSTRUCTION OR TO FURNISH THIS INFORMATION TO OTHERS. ALL DRAWINGS MUST BE RETURNED TO A-T CONTROLS, INC. ON DEMAND. THIS DRAWING IS NOT TO BE REPRODUCED OR COPIED IN ANY FORM WITHOUT THE EXPRESS WRITTEN PERMISSION OF A-T CONTROLS, INC.