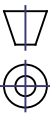




THE DESIGN AND PROVISIONS CONTAINED IN THIS DRAWING WAS ORIGINATED BY AND IS EXCLUSIVE PROPERTY OF A-T CONTROLS, INC. IT IS FURNISHED FOR YOUR INFORMATION ONLY AND IS NOT TO BE REPRODUCED OR COPIED IN ANY FORM WITHOUT THE EXPRESS PERMISSION OF A-T CONTROLS, INC.

9955 INTERNATIONAL BLVD.  
CINCINNATI, OHIO 45246  
PHONE: (513) 247-5465  
FAX: (513) 247-5462



DO NOT SCALE DRAWING

THE FOLLOWING TABLES  
CONTAINING SYMBOLS,  
DIMENSIONS, MATERIALS,  
FINISHES, ETC., SHALL BE  
CONSULTED IN CONNECTION  
WITH THIS DRAWING.

DRAWN BY KJS DATE 08/30/22  
CHECKED BY TEM DATE 08/30/22  
RELEASED BY TEM DATE 08/30/22

HEAT # SHEET 1 OF 1  
MATERIAL

DESCRIPTION  
SRX-3200 ELECTRIC ACTUATOR  
120/240 VAC / 1PH / 50-60 HZ  
TWO POSITION

DRAWING NO. SE01852

REVISION

LIMIT SWITCH OPERATION			
SWITCH	CLOSED	INTERMEDIATE	OPEN
CLS 1-2			
CLS 1-3			
OLS 1-2			
OLS 1-3			
ACLS 1-2			
ACLS 1-3			
AOLS 1-2			
AOLS 1-3			

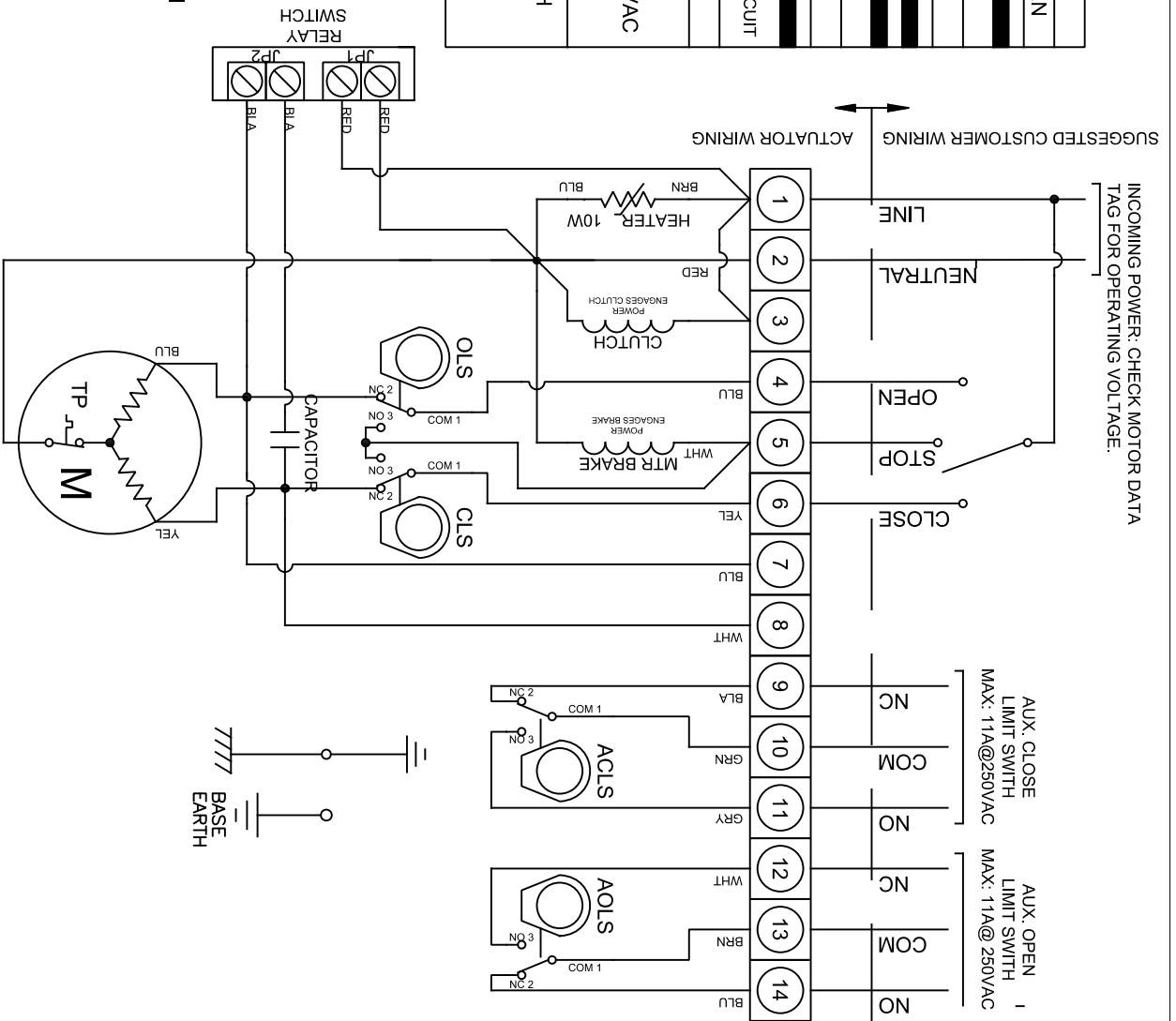
  

SYMBOL	DESCRIPTION	RATING
ACLS	AUX. CLOSE LIMIT SWITCH	11A @ 250 VAC
CLS	CLOSE LIMIT SWITCH	
AOLS	AUX. OPEN LIMIT SWITCH	
OLS	OPEN LIMIT SWITCH	

EACH ACTUATOR SHOULD BE POWERED THROUGH INDIVIDUAL SWITCH OR RELAY CONTACTS TO PREVENT CROSS FEED BETWEEN TWO OR MORE ACTUATORS.

Operation Notes:

1. Power to terminal 4 will drive motor CCW. Brake energizes when NO of OLS closes to hold actuator in CCW position.
2. Power to terminal 6 will drive motor CW. Brake energizes when NO of CLS closes to hold actuator in CW position.
3. Power to terminal 5 will energize brake and hold actuator in intermediate STOP position.
4. Loss of power will cause spring to return actuator to fail position (limited by adjustable mechanical stop bolt).
5. Fail Closed (FC) Model: Fail Position = CW  
Fail Open (FO) Model: Fail Position = CCW



INCOMING POWER: CHECK MOTOR DATA TAG FOR OPERATING VOLTAGE.

AUX. CLOSE LIMIT SWITCH  
MAX: 11A@250VAC

AUX. OPEN LIMIT SWITCH  
MAX: 11A@250VAC