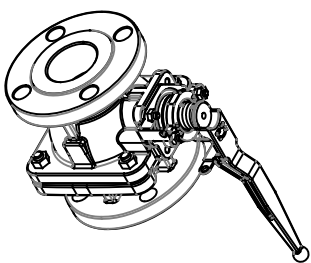
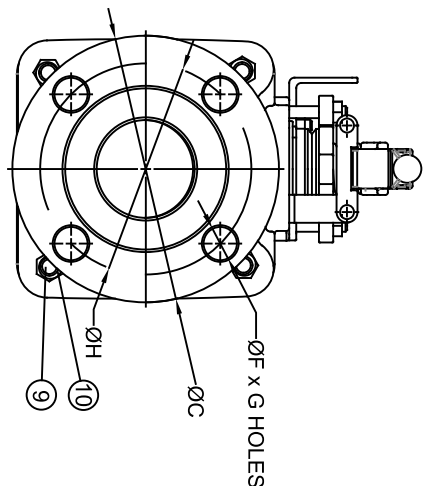
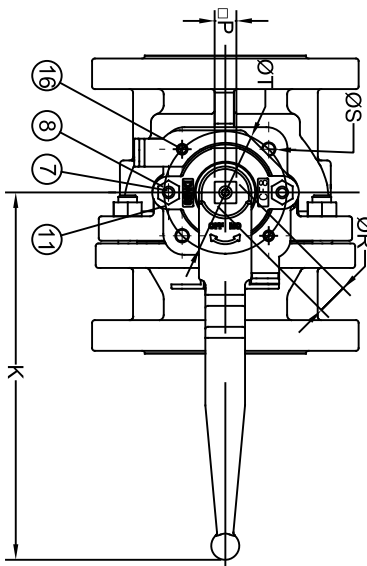
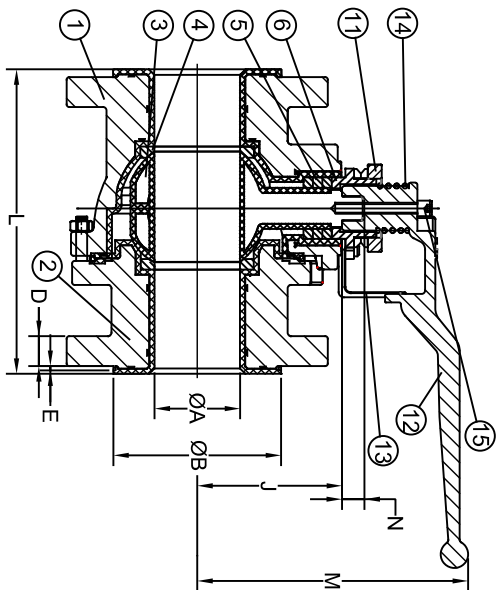


Series L2/L2C PFA Lined Ball Valve

1/2" - 4"



NO.	Part Name	QTY	Material
1	BODY	1	ASTM A351 GRADE CF8M + PFA
2	END CAP	1	ASTM A351 GRADE CF8M + PFA
3	BALL/STEM	1	ASTM A351 GRADE CF8M/XM-19 + PFA
4	SEAT	2	PTFE
5	PACKING	1SET	PTFE
6	GLAND BUSHING	1	3045ST
7	PACKING GLAND BOLT	2	ASTM A193 GRADE B8
8	PACKING GLAND NUT	2	ASTM A193 GRADE B8
9	BODY STUD	*	ASTM A193 GRADE B8
10	BODY STUD NUT	*	ASTM A193 GRADE B8
11	PACKING GLAND	1	3045ST
12	HANDLE	1	3045ST
13	LOCKING PLATE	1	3045ST
14	ANTI-STATIC SPRING	1	3045ST
15	HANDLE SCREW	1	3045ST
16	LOCKING PLATE BOLT	2	3045ST

*QTY 4 FOR 1/2" - 2" VALVES
*QTY 6 FOR 2-1/2" - 4" VALVES

- Design & Features:**
- *Pressure Rating : CF8M-19 Bar (275 PSIG) ; WCB-19.6 Bar (285 PSIG)
 - * Valve Body & Cap is Investment Casting
 - * Fully Conforms To ASME B16.34
 - * Suitable for non-explosive-hazardous area only
 - * Blow-off Proof Stem Design
 - * One Piece Ball And Stem
 - * Spark Test Standard : 20KV For PFA Lining
 - * PFA Lining Shall Be A Minimum Of 3mm Thick On Both Body And Ball Of Valve
 - * Working Temperature Rating : PFA : -20 ~ 400 °F
 - * Flange Dimensions According to ASME B16.5 CLASS 150 RF
 - * Face to Face According to ASME B16.10 CLASS 150
 - * Pressure / Temperature Rating According to ASME B16.34
 - * Pressure Tested Accordance With API 598:
 - Shell Test : CF8M-425 PSIG; WCB-450 PSIG
 - Low Pressure Seat Closure : 6 Bar (87 PSIG) WITH AIR

MATERIALS LISTED ARE FOR THE STANDARD CONFIGURATION. OTHER MATERIALS ARE AVAILABLE UPON REQUEST.

Size	ØA	ØB	ØC	D	E	ØF	G	H	J	K	L	M	N	ØP	ØR	ØS	T	ISO 5211	Weight (lbs)
1/2"	0.59	1.38	3.50	0.38	0.06	0.63	4	2.38	2.01	6.79	4.25	4.47	0.37	0.433	0.612	M6	1.969	F05	7.3
3/4"	0.79	1.69	3.90	0.44	0.06	0.63	4	2.75	2.01	6.79	4.61	4.47	0.37	0.433	0.612	M6	1.969	F05	7.9
1"	0.98	2.00	4.25	0.50	0.06	0.63	4	3.12	2.01	6.79	5.00	4.47	0.37	0.433	0.612	M6	1.969	F05	8.8
1-1/2"	1.50	2.87	5.00	0.63	0.06	0.63	4	3.88	2.93	8.27	6.50	6.05	0.59	0.551	0.779	M8	2.756	F07	20.9
2"	1.97	3.62	5.98	0.68	0.06	0.75	4	4.75	3.23	8.27	7.01	6.05	0.59	0.551	0.779	M8	2.756	F07	23.6
2-1/2"	2.50	4.12	7.01	0.81	0.06	0.75	4	5.50	4.76	12.60	7.48	8.02	0.80	0.748	1.058	M10	4.016	F10	39.7
3"	2.99	5.00	7.48	0.88	0.06	0.75	4	6.00	4.76	12.60	7.99	8.02	0.80	0.866	1.225	M10	4.016	F10	50.7
4"	3.90	6.19	9.02	0.88	0.06	0.75	8	7.50	5.37	20.00	9.02	8.57	0.74	0.866	1.225	M10	4.016	F10	85.8

DIMENSIONS ARE IN INCHES UNLESS OTHERWISE NOTED



9955 INTERNATIONAL BLVD.
CINCINNATI, OHIO 45246
PHONE: (513) 247-5465
FAX: (513) 247-5462

DO NOT SCALE DRAWING

TOLERANCE UNLESS OTHERWISE SPECIFIED:
FINISH: POLISH
THREADS: UNF
MATERIAL: PFA

DRAWN BY: CMB
CHECKED BY: NPM
RELEASED BY: NPM
DATE: 01/06/23
DATE: 07/26/22
DATE: 07/26/22

HEAT #
MATERIAL

SHEET 1 OF 1

THE DESIGN AND DISCLOSURE CONTAINED IN THIS DRAWING IS THE PROPERTY OF TRIAS CONTROLS, INC. AND IS EXCLUSIVE. NO PART OF THIS DRAWING IS TO BE REPRODUCED OR COPIED IN ANY FORM WITHOUT THE EXPRESS WRITTEN PERMISSION OF TRIAS CONTROLS, INC.

DESCRIPTION
1/2" - 4" SERIES L2/L2C DIMENSIONAL DRAWING

DRAWING NO.
P04362

REVISION