



# ***Floor Mounted Damper Drives***

***Pneumatic***

*Up to 300,000 In-Lbs torque*

***Electric***

*Up to 80,000 In-Lbs torque*



**A-T Controls, Inc.**



**TRIAC®**

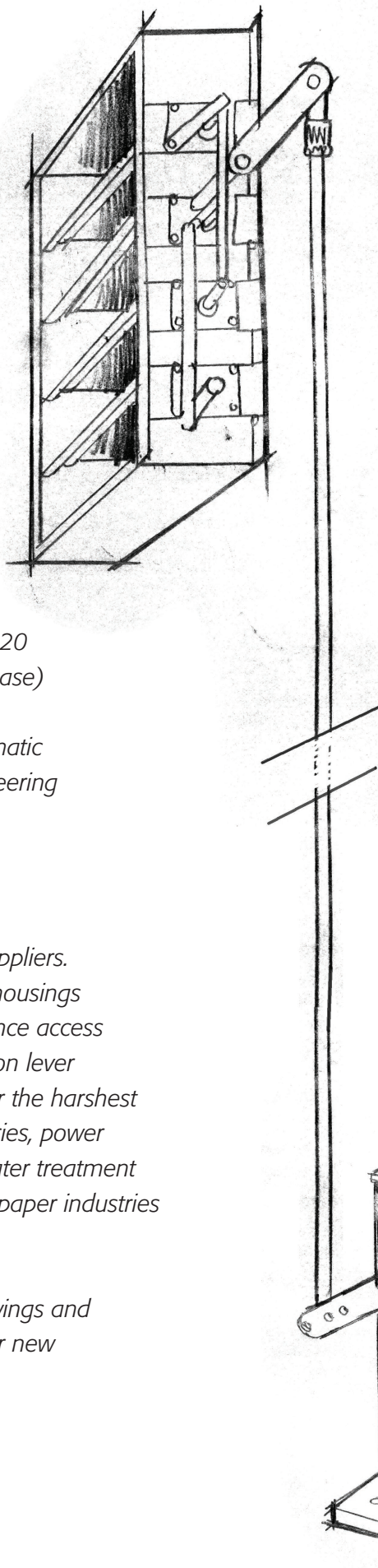
## **Floor Mounted Damper Drives**

*Triac floor mounted damper drives are the best choice for operating dampers, vanes and fan control where high vibration, heat, extreme cold, dust and inaccessibility render direct coupling of actuators to shafts impractical.*

*Available in pneumatic (on-off and modulating), and electric (24 VDC, 120 VAC 1-phase, 220 and 440 volt 3-phase) configurations, these rugged drives combine industry proven Triac pneumatic and electric actuators with our engineering expertise.*

*The rugged frames can be ordered to dimensionally replace older drives manufactured by several previous suppliers. Triac frames consist of welded steel housings with pillow block bearings, maintenance access panels, and our unique infinite position lever arms. The units are tough enough for the harshest environments found in today's refineries, power plants, steel-making boiler rooms, water treatment facilities, pollution controls, pulp and paper industries and co-generation turbine units.*

*Contact A-T Controls for specific drawings and specifications for your replacement or new applications.*





## Pneumatic Damper Drive Options

Torque 420 In-Lbs to 300,000 In-Lbs  
 Solenoid Valves  
 Limit Switches  
 Positioners  
 (4-20ma, Digital, Hart Protocol)  
 Position Transmitters  
 Manual Overrides  
 Air Lockup Circuits  
 High Temperature Seals  
 Custom Connection Linkage



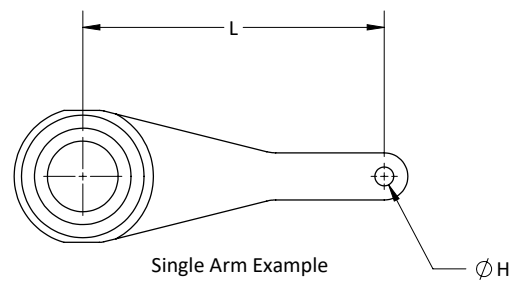
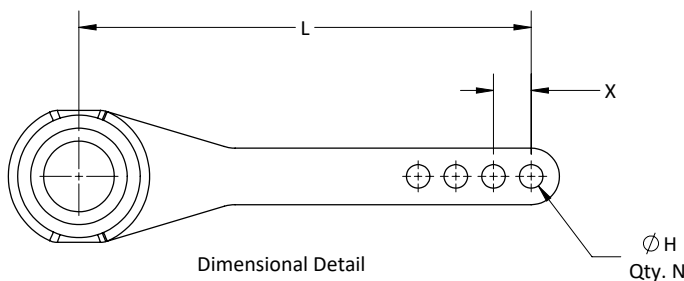
## Electric Damper Drive Options

Torque 690 In-Lbs to 80,000 In-Lbs  
 24 VDC  
 Single Phase  
 3-phase  
 On-off  
 Modulating  
 Custom Connection Linkage

## Applications

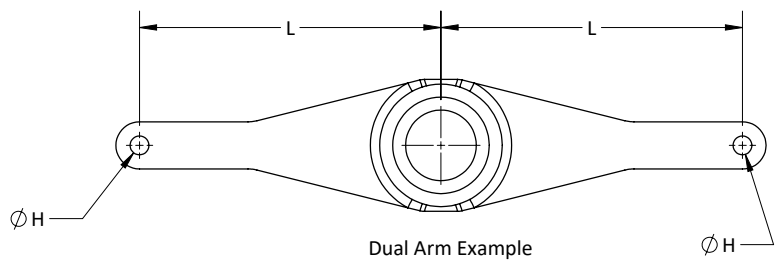
Dampers  
 Vanes  
 Van Axial Fans  
 ID Fans  
 Louvers  
 FD Fans  
 ID Fans  
 Seal Air Fans  
 Process Heaters  
 Reheat Dampers  
 SCR Systems  
 Fly Ash Systems  
 Bottom Ash Hoppers  
 Flap Gate  
 Baghouse

### Drive Arm Dimensions (Customer Specified)



### When Ordering, Please Specify Dimensions

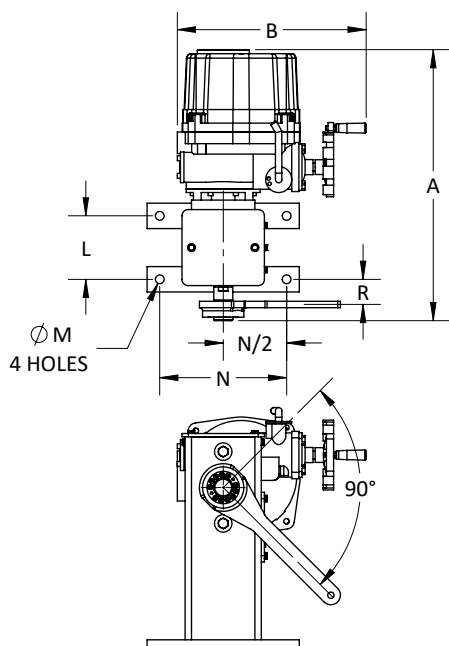
Arm Type (Choose One)	Single Arm <input type="checkbox"/>
	Dual Arm <input type="checkbox"/>
Arm Length (L)	_____
Hole Diameter (H)	_____
Number of Holes (N)	_____
Spacing Between Holes (If Applicable) (X)	_____



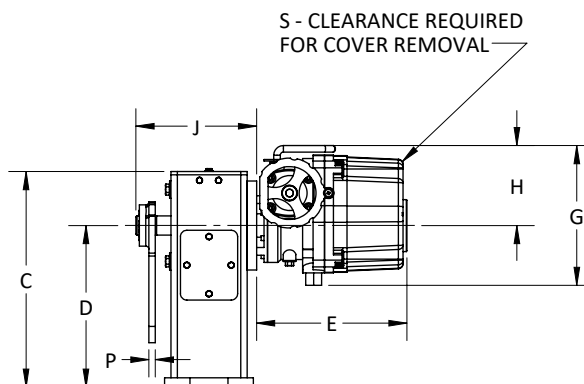


## Floor Mounted Damper Drives

## Electric Dimensions



Drawings will be provided with each order.

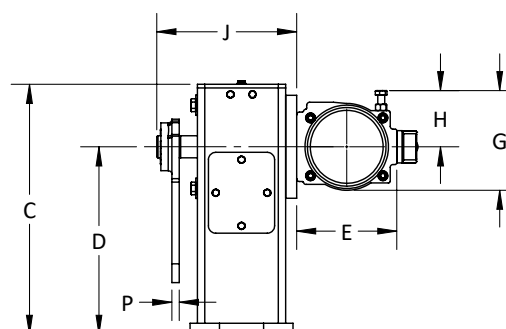
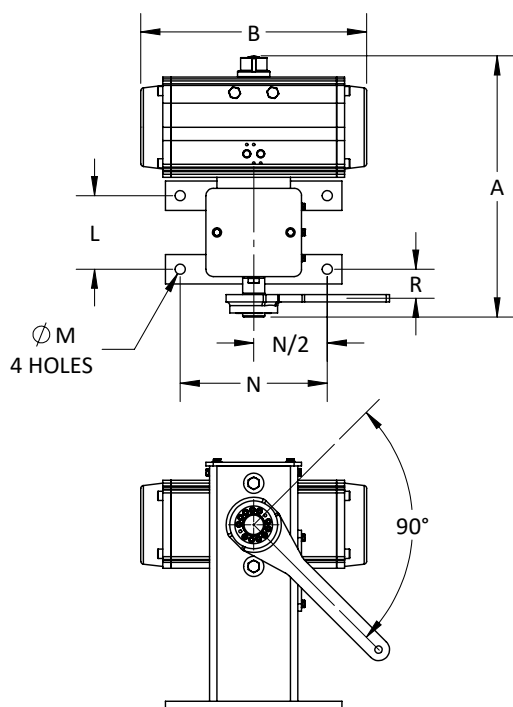


**TRIAC Floor Drive with WE Series Actuators**

Actuator	A	B	C	D	E	F	G	H	J	L	M	N	P	R (Approx.)	S
WE-500	14.83	5.25	17.00	12.75	2.45	5.33	5.92	3.47	9.50	5.00	0.69	10.00	0.50	1.98	2.29
WE-690	18.75	10.16	17.00	12.75	1.97	9.25	6.69	3.94	9.50	5.00	0.69	10.00	0.50	1.98	4.72
WE-1350	20.05	13.31	17.00	12.75	2.87	10.55	9.02	5.59	9.50	5.00	0.69	10.00	0.50	1.98	6.30
WE-1700	20.05	13.31	17.00	12.75	2.87	10.55	9.02	5.59	9.50	5.00	0.69	10.00	0.50	1.98	6.30
WE-2640	20.90	14.49	17.00	12.75	3.23	11.42	10.20	6.30	9.48	5.00	0.69	10.00	0.50	1.95	7.09
WE-4400	21.48	14.49	17.00	12.75	3.23	11.97	10.20	6.30	9.51	5.00	0.69	10.00	0.50	1.98	7.09
WE-5200	21.48	14.49	17.00	12.75	3.23	11.97	10.20	6.30	9.51	5.00	0.69	10.00	0.50	1.98	7.09
WE-6900	23.00	16.14	17.00	12.75	4.06	12.99	11.69	7.32	10.01	5.00	0.69	10.00	0.50	1.98	8.27
WE-10500	23.00	16.14	17.00	12.75	4.06	12.99	11.69	7.32	10.01	5.00	0.69	10.00	0.50	1.98	8.27
WE-17500	32.18	16.14	24.25	19.25	4.06	22.17	12.56	7.32	10.01	5.00	0.69	12.00	0.75	2.25	8.27
WE-25900	32.18	16.14	24.25	19.25	4.06	22.17	12.56	7.32	10.01	5.00	0.69	12.00	0.75	2.25	8.27
WE-53000	40.43	20.32	24.25	19.25	9.15	26.30	16.42	8.82	14.13	7.00	0.81	16.00	1.00	3.37	8.86
WE-80000	40.43	20.32	24.25	19.25	9.15	26.30	16.42	8.82	14.13	7.00	0.81	16.00	1.00	3.37	8.86










## Pneumatic Dimensions



### TRIAC Floor Drive with 3R Series Actuators

Actuator	A	B	C	D	E	G	H	J	L	M	N	P	R (Approx.)
3R40	13.76	7.60	17.00	12.75	3.47	3.35	1.85	9.50	5.00	0.69	10.00	0.50	1.98
3R80	14.59	9.29	17.00	12.75	4.30	4.18	2.24	9.50	5.00	0.69	10.00	0.50	1.98
3R130	14.90	11.02	17.00	12.75	4.61	4.27	2.30	9.50	5.00	0.69	10.00	0.50	1.98
3R200	15.57	11.50	17.00	12.75	5.28	4.57	2.52	9.50	5.00	0.69	10.00	0.50	1.98
3R300	16.40	13.39	17.00	12.75	6.14	5.49	2.93	9.48	5.00	0.69	10.00	0.50	1.95
3R500	17.50	15.35	17.00	12.75	6.81	5.59	3.03	9.51	5.00	0.69	10.00	0.50	1.98
3R700	18.05	16.89	17.00	12.75	7.36	5.94	3.19	9.51	5.00	0.69	10.00	0.50	1.98
3R850	18.50	19.37	17.00	12.75	7.81	6.34	3.43	9.51	5.00	0.69	10.00	0.50	1.98
3R1000	19.15	19.31	17.00	12.75	8.46	7.01	3.74	9.51	5.00	0.69	10.00	0.50	1.98
3R1200	20.25	22.36	22.50	18.25	9.06	7.44	4.06	10.01	5.00	0.69	12.00	0.75	2.25
3R1750	21.23	23.54	22.50	18.25	10.08	8.27	4.45	10.01	5.00	0.69	12.00	0.75	2.25
3R2400	26.77	24.80	24.25	19.25	11.46	9.65	5.12	14.13	7.00	0.81	16.00	1.00	3.37
3R2500	25.43	27.38	24.25	19.25	10.12	9.38	4.75	14.13	7.00	0.81	16.00	1.00	3.37
3R2700	28.30	28.27	24.25	19.25	12.99	10.75	5.79	14.13	7.00	0.81	16.00	1.00	3.37
3R3300	29.15	30.47	24.25	19.25	13.84	12.32	6.38	14.13	7.00	0.81	16.00	1.00	3.37
3R3500	25.43	40.50	24.25	19.25	10.12	9.38	4.75	14.13	7.00	0.81	16.00	1.00	3.37

## Accessories

Limit Switches		Solenoids	Positioners	Mighty Controllers	Control Options & Other Accessories
					
APL SERIES	EX, EC, ES, EY & EW SERIES	TVCS, TVC5, TVC6 & others	PPR, EPR, SS2, SS3 & SS5	MVC SERIES	
Various models of CSA limit switch boxes 	Various limit switch boxes	NAMUR mount, solenoids or pipe mounted	Pneumatic, electro-pneumatic, digital or “smart”	Edge Computing Controller	Speed controls, flow controls, lock-up valves Filter regulators, dribble controls, & others
APL-2, APL-3, APL-4, APL-5, APL-9	EX, EC, ES, EY & EW Series	TVCS, TVC5, TVC6 & others	EPR1000, PPR1200, 760, PS2, TZIDC, SS2, SS3, SS5	MVCG1, MVCG2, MVCG3	Various, Call Factory
Weatherproof, Explosion-Proof Materials, switch types	Weatherproof, Explosion-Proof Materials, switch types	Weatherproof, Explosion-Proof, 3, 4 or 5-way	Pneumatic, electro-pneumatic, digital “smart” HART, FieldBus	Functionality configurable via software	Various, Call Factory
CSA Type 4, 4X, 7, SPDT, proximity, low voltage, high amp. & others	SPDT, proximity, low voltage, high amp. AS-i & others	2-position, 3-position, single or dual coil	Rotary or linear	Safe areas, Explosion Proof	Various, Call Factory
Aluminum or Stainless Steel	Aluminum or Stainless Steel	Aluminum or Stainless Steel	Aluminum body	Polycarbonate, Aluminum, or Stainless Steel	Various, Call Factory
2-way & 3-way position indicators	2-way & 3-way position indicators	Direct-mount	Easy to calibrate, repeatable	24 point iGPIO, Universal Power, Industrial Temp Range, IP68, Industry standard communication protocols	Various, Call Factory
Several types of communication options	Several types of communication options	Various voltages & configurations	Transmitters, limit switches, mounting hardware, call with requirements	Factory installed apps, local hand controls	Various, Call Factory



# Floor Drive Part Number Matrix

1 (A) Pneu Actuator - 3R, 3N, 3P Series			
<b>3RE</b>	3R40	<b>3RN</b>	3R1000
<b>3RF</b>	3R80	<b>3RP</b>	3R1200
<b>3RG</b>	3R130	<b>3RR</b>	3R1750
<b>3RH</b>	3R200	<b>3RS</b>	3R2400
<b>3RJ</b>	3R300	<b>3RT</b>	3R2500
<b>3RK</b>	3R500	<b>3RU</b>	3R2700
<b>3RL</b>	3R700	<b>3RV</b>	3R3300
<b>3RM</b>	3R850	<b>3RW</b>	3R3500

1 (A) Pneumatic Actuator - S2 Series			
<b>S2D</b>	S2-063	<b>S2H</b>	S2-140
<b>S2E</b>	S2-083	<b>S2J</b>	S2-160
<b>S2F</b>	S2-105	<b>S2K</b>	S2-210
<b>S2G</b>	S2-125		

1 (B) Pneumatic Action	
<b>D</b>	Double Acting (DA)
<b>S</b>	Spring CW (5 Springs)*
<b>O</b>	Spring CCW (5 Springs)*
<b>4</b>	Spring CW (4 Springs)**
<b>F</b>	Spring CCW (4 Springs)**

\*2500 & 3500 80 psig spring

\*\*2500 & 3500 60 psig spring

1 Actuator - Electric (On-Off)			
<b>WEA1</b>	WE-500	<b>WEH1</b>	WE-6900
<b>WEB1</b>	WE-690	<b>WEJ1</b>	WE-10500
<b>WEC1</b>	WE-1350	<b>WEK1</b>	WE-17500
<b>WED1</b>	WE-1700	<b>WEL1</b>	WE-25900
<b>WEE1</b>	WE-2640	<b>WEM1</b>	WE-53000
<b>WEF1</b>	WE-4400	<b>WEN1</b>	WE-80000
<b>WEG1</b>	WE-5200		

1 Actuator - Electric (Modulating)			
<b>WEA2</b>	WEM-500	<b>WEH2</b>	WEM-6900
<b>WEB2</b>	WEM-690	<b>WEJ2</b>	WEM-10500
<b>WEC2</b>	WEM-1350	<b>WEK2</b>	WEM-17500
<b>WED2</b>	WEM-1700	<b>WEL2</b>	WEM-25900
<b>WEE2</b>	WEM-2640	<b>WEM2</b>	WEM-53000
<b>WEF2</b>	WEM-4400	<b>WEN2</b>	WEM-80000
<b>WEG2</b>	WEM-5200		

2	Accessories/Options	Model No.
<b>X</b>	No Specials	
<b>A</b>	TYPE 4 Solenoid 120VAC	TVCS-X411-4N-A120
<b>B</b>	TYPE 7 Solenoid 120VAC	TVC6-X411-7N-A120
<b>C</b>	Intrinsically Safe Solenoid	TVIS-X411-4N-D24
<b>D</b>	TYPE 4 Solenoid 24VDC	TVC6-X411-7N-D24
<b>F</b>	TYPE 7 Solenoid 24VDC	TVC6-X411-7N-D24
<b>Q</b>	TYPE 4 SST Solenoid 120VAC	TVSS-X411-4N-A120
<b>M</b>	TYPE 7 SST Solenoid 120VAC	TVSS-X411-7N-A120
<b>L</b>	TYPE 4 SST Solenoid 24VDC	TVSS-X411-4N-D24
<b>N</b>	TYPE 7 SST Solenoid 24VDC	TVSS-X411-7N-D24
<b>P</b>	Pneumatic Positioner	PPR-1200
<b>E</b>	Electro-Pneumatic Positioner	EPR-1000
<b>R</b>	24VDC Electric Actuator	
<b>S</b>	220VAC Electric Actuator	
<b>T</b>	Other Voltage Electric Actuator	
<b>W</b>	12VDC Electric Actuator	
<b>Y</b>	24VAC Electric Actuator	

\*No voltage specified on electric assemblies denotes 120VAC

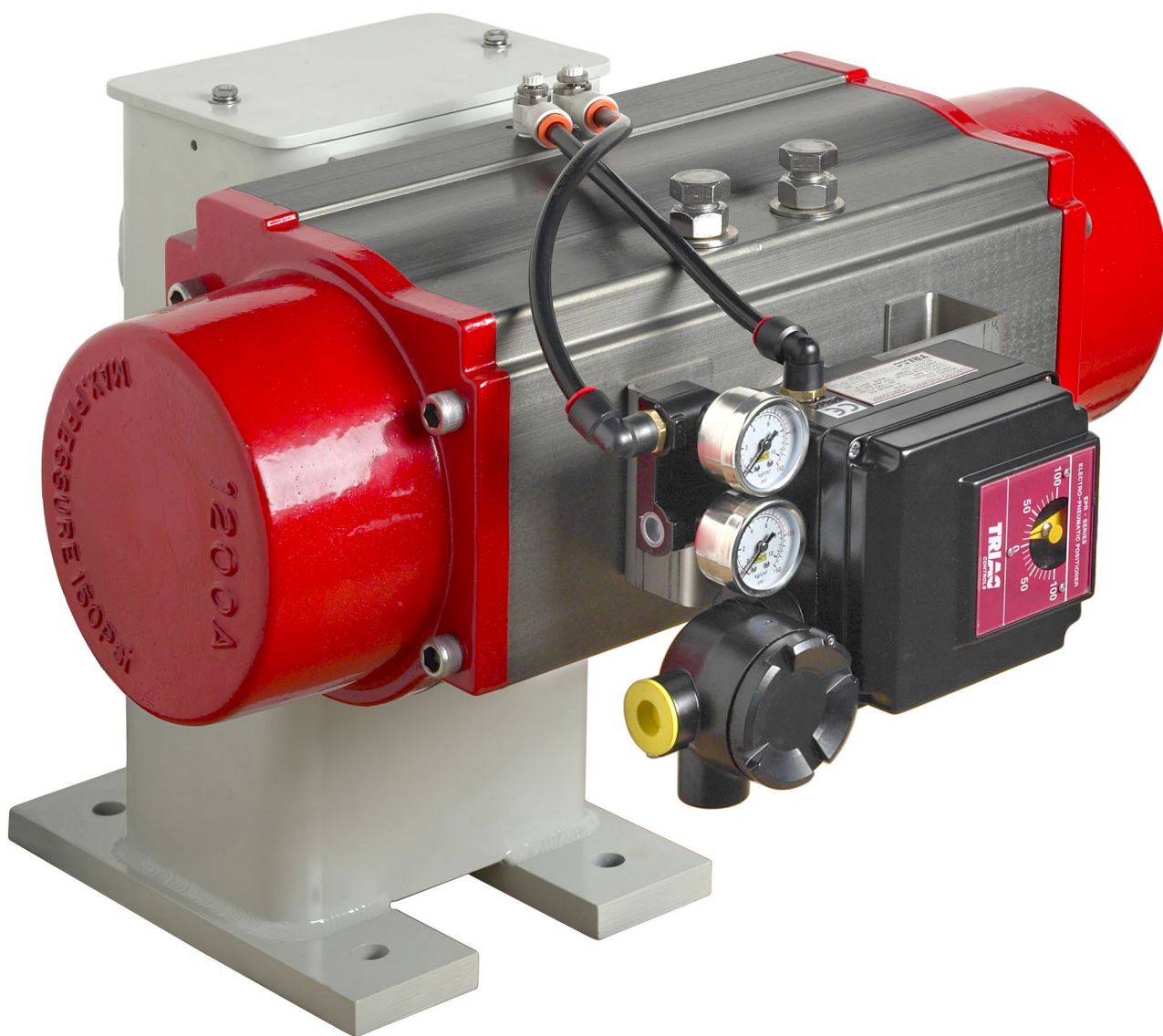
3	Accessories	Model No.
<b>X</b>	No Specials	
<b>A</b>	TYPE 4 Limit Switch	APL-210N
<b>B</b>	TYPE 7 Limit Switch	APL-510N
<b>C</b>	Intrinsically Safe Limit Switch	APL-218N
<b>Q</b>	TYPE 4 SST Limit Switch	APL-910N
<b>M</b>	TYPE 7 SST Limit Switch	APL-510S
<b>1</b>	HS1 High Speed Electric	
<b>2</b>	HS2 High Speed Electric	

4 Gear Override (For Pneumatic Actuators Only)	
<b>Blank</b>	No Gear Override
<b>G</b>	Declutchable Gear Override

HOW TO ORDER FLOOR DRIVES				
1	-	2	3	-
↓		↓	↓	↓
FD3RKD	-	X	X	-

**TRIAC®**

**Floor Mounted  
Damper Drives**



FD-20240206  
Copyright 2013 A-T Controls, Inc.  
LIT0027

**A-T Controls, Inc.**

9955 International Blvd. PHONE (513) 247-5465  
Cincinnati, Ohio 45246 FAX (513) 247-5462  
www.atcontrols.com sales@atcontrols.com