



Star Insert

Star Inserts are designed to match the square stem of a valve to the star drive of an actuator to allow for a direct mount. They are available for several common combinations of stem and drive sizes. Inserts are available in both carbon steel and stainless steel, to match the needs of the application.

Sliding Star Insert vs. Non-Sliding Star Insert

Sliding Star Inserts are the basic type of insert and when installed, the insert can “slide” to the full depth of the actuator drive (when the actuator is upside down). Actuator drive depth should be considered when using a Sliding Star Insert so that the insert does not become disengaged. Non-Sliding Star Inserts are used for actuators with deep drives, such as the WE/XE/XC and SRX-Series electric actuators. These inserts are swaged at the bottom end. The swaged end prevents the insert from sliding up into the actuator and causing the insert to become disengaged with the valve stem.

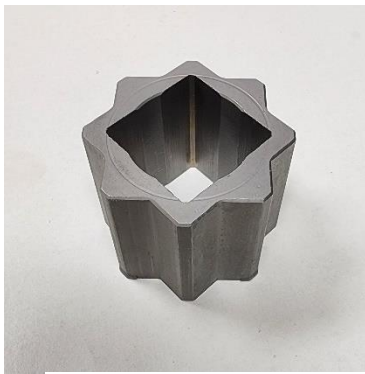


Figure 1 - Sliding Star Insert



Figure 2 - Non-Sliding Star Insert

Star Insert Part Numbers

The part numbers for Star Inserts are defined as follows. The first three characters describe the type of insert. ATS designation indicates a Sliding Star Insert, while ATN designation indicates a Non-Sliding Star Insert. The outer (male) dimension, in millimeters, is followed by M, while the inner (female) dimension is followed by F. The suffix at the end of the part number indicates the material, -C for carbon steel and -S for stainless steel.

Example: ATS36M27F-C would specify a Sliding Star Insert with an outer dimension of 36mm (1.417”), an inner dimension of 27mm (1.063”), made of carbon steel.

Insert Type	Outer Dimension (M)	Inner Dimension (F)		Material
↓	↓	↓		↓
ATS	36M	27F	-	C

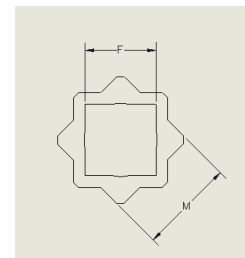


Figure 3 - Star Insert Dimensions



A-T Controls, Inc.

9955 International Blvd. • Cincinnati, Ohio 45246
 Phone: 513.247.5465 Fax: 513.247.5462
 www.atcontrols.com

Engineer: RMG **No.:** 00094
Date Created: 04/23/2024
Date Modified:

Carbon Steel Star Inserts				Stainless Steel Star Inserts			
Part Number	Type	Exterior Size	Interior Size	Part Number	Type	Exterior Size	Interior Size
ATS17M9F-C	Sliding	17	9	ATS11M9F-S	Sliding	11	9
ATS17M11F-C	Sliding	17	11	ATS14M9F-S	Sliding	14	9
ATS17M14F-C	Sliding	17	14	ATS14M11F-S	Sliding	14	11
ATS19M9F-C	Sliding	19	9	ATS19M9F-S	Sliding	19	9
ATS19M11F-C	Sliding	19	11	ATS19M11F-S	Sliding	19	11
ATS19M14F-C	Sliding	19	14	ATS19M14F-S	Sliding	19	14
ATS19M17F-C	Sliding	19	17	ATS19M17F-S	Sliding	19	17
ATS22M11F-C	Sliding	22	11	ATS22M11F-S	Sliding	22	11
ATS22M14F-C	Sliding	22	14	ATS22M14F-S	Sliding	22	14
ATS22M17F-C	Sliding	22	17	ATS22M17F-S	Sliding	22	17
ATS22M19F-C	Sliding	22	19	ATS22M19F-S	Sliding	22	19
ATS27M11F-C	Sliding	27	11	ATS27M11F-S	Sliding	27	11
ATS27M14F-C	Sliding	27	14	ATS27M14F-S	Sliding	27	14
ATS27M17F-C	Sliding	27	17	ATS27M17F-S	Sliding	27	17
ATS27M19F-C	Sliding	27	19	ATS27M19F-S	Sliding	27	19
ATS27M22F-C	Sliding	27	22	ATS27M22F-S	Sliding	27	22
ATS36M17F-C	Sliding	36	17	ATS36M17F-S	Sliding	36	17
ATS36M19F-C	Sliding	36	19	ATS36M19F-S	Sliding	36	19
ATS36M22F-C	Sliding	36	22	ATS36M22F-S	Sliding	36	22
ATS36M27F-C	Sliding	36	27	ATS36M27F-S	Sliding	36	27
ATS46M36F-C	Sliding	46	36				
ATN17M9F-C	Non-Sliding	17	9				
ATN17M11F-C	Non-Sliding	17	11				
ATN17M14F-C	Non-Sliding	17	14				
ATN19M9F-C	Non-Sliding	19	9				
ATN19M11F-C	Non-Sliding	19	11				
ATN19M14F-C	Non-Sliding	19	14				
ATN19M17F-C	Non-Sliding	19	17				
ATN27M11F-C	Non-Sliding	27	11				
ATN27M14F-C	Non-Sliding	27	14				
ATN27M17F-C	Non-Sliding	27	17				
ATN27M19F-C	Non-Sliding	27	19				
ATN27M22F-C	Non-Sliding	27	22				
ATN36M17F-C	Non-Sliding	36	17				
ATN36M19F-C	Non-Sliding	36	19				
ATN36M22F-C	Non-Sliding	36	22				
ATN36M27F-C	Non-Sliding	36	27				

Document was originated by, and is exclusive property of A-T Controls, Inc. Not to be reproduced or copied in any form without the express written permission of A-T Controls, Inc.

